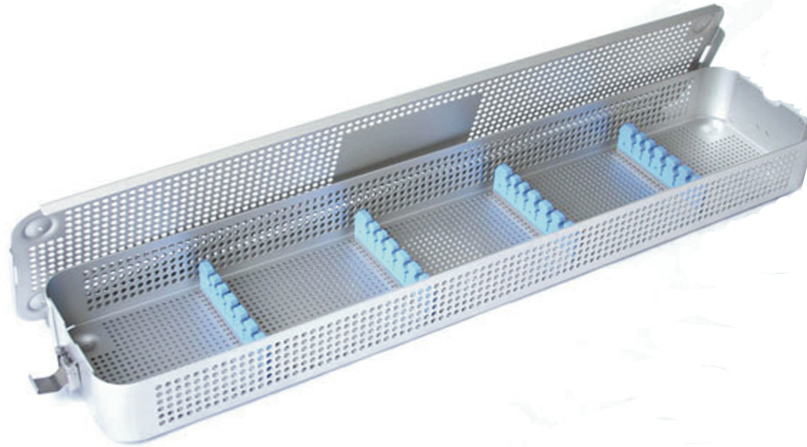


Full Sized Custom ProTech^(tm) Trays

Design a ProTech^(tm) Tray to meet your exact needs



Product Code: 30320-H

Available in several sizes, these customisable ProTech(TM) trays are made of anodised aluminium with mini perforations to allow for proper penetration of sterilant during the sterilisation process.

Available as single or double layer, these trays come equipped with collapsible grips and sturdy snap latches for secure lid locking.

Additional options include insert trays, silicone instrument mats and instrument brackets allowing for any number of configurations to ensure that instruments remain protected and secure at all times.