

Perfection into every detail



- Development, production and sales of
- Sterilization & monitoring products
 - Documentation & traceability products
 - Capital equipment products
 - Heat sealers

■ STERILIZATION / MONITORING PRODUCTS

Bowie & Dick Test	06
Lot Control Test Set	11
Integrators	14

■ STERILIZATION DOCUMENTATION AND TRACEABILITY

Documentation labels	20	2-, 3-line label gun & double marking labels	26
Computer labels / patient documentation labels	22	Container labels / container seal labels	33
		Instrument protection, Tray labels, Markers	36
		Thermo transfer rolls, Tape, Tape dispenser	39

■ PACKING, PROCESS VALIDATION AND ACCESSORIES

Heat sealers	44
Roll holders with cutting device	50
Seal test	52

■ PRE-CLEANING

Pre-cleaning stations	56	Clean-up counter	64
Clean-up counter for cleaning endoscopes	60	Built-in / Benchtop ultrasonic cleaners	66
Fully automatic pre-cleaning stations	62	Ultrasonic cleaner for MIS instruments	70
		Spray gun for water & air	72

■ PACKING

Linen inspection table	78	Workstation	84
Height adjustable packing tables	79	Paper trolley	85
Fixed height packing tables	82	Instrument tables	86

■ TRANSPORT

Car-in-car system	90	Open transport trolley with shelves	96
Closed transport trolley	92	Peracetic acid transport trolley	97
Open transport trolley with slides	94	Electrical height adjustable transport trolleys	98
		Pass-through cabinets	100

■ STORAGE

Baskets	102	Storage system	106
Instrument trays	104	Storage cabinets	107
		Pass-through hatches	107

„Your partner for highest quality standards
and special requirements“



Famos Medizintechnik-Vertriebs GmbH

Robert-Bosch-Straße 3
47638 Straelen
Germany
Telefon +49 (0) 2834 - 6704
Telefax +49 (0) 2834 - 8571
www.famos-med.de
sales@famos-med.de

FAMOS Medizintechnik Vertriebs GmbH is the German subsidiary of FAMOS bv and was founded in 1992 in Straelen / Germany. FAMOS GmbH develops, produces and sells a wide range of sterilization & monitoring products as well as documentation & traceability products.

In the past few years monitoring, validation and documentation of the sterilization processes have become significantly more important. The reason for this is that international guidelines and standards are being implemented ever more frequently at the central sterile supply department in hospitals nowadays. Moreover, routine check-ups are being done on a regular basis as well.

In order to guarantee that the products fulfill the aforementioned standards, Famos GmbH has implemented a quality management system according to DIN EN ISO 9001 and DIN EN ISO 13485.

Over the years FAMOS GmbH has gained a lot of experience and product knowledge which made the company well established. Its products are being marketed and sold worldwide through a distributor network in more than 40 countries nowadays.

The FAMOS GmbH products range can be divided as follows:

■ **STERILIZATION / MONITORING PRODUCTS**

- BOWIE DICK TESTS
- LOT CONTROL TESTS
- CHEMICAL INTEGRATORS

■ **DOCUMENTATION / TRACEABILITY PRODUCTS:**

- INDICATOR LABELS
- PATIENT DOCUMENTATION LABELS
- PROCESS DOCUMENTATION LABELS
- CONTAINER LABELS
- LABEL GUNS INCLUDING MATCHING LABELS

FAMOS GmbH offers a wide range of standard products. Furthermore, its flexible production allows Famos GmbH to react to customer specific demands by offering customized product solutions and OEM products.

Please contact us for more information!

With kind regards,

Famos Medizintechnik Vertriebs GmbH
Tom J.E. van Gardingen, Managing Director

„Your partner for highest quality standards and special requirements“



Famos bv

Noorderpoort 20

5916 PJ Venlo

The Netherlands

Telefon +31 (0) 77 - 3548800

Telefax +31 (0) 77 - 3520432

www.famos-medical.com

famos@famos.nl

Famos is a family owned company and was founded in 1946 in Venlo / The Netherlands. It is now being managed by the third generation of the founders family. Over the years FAMOS has become one of the leading manufacturers of products related to Central Sterile Supply Departments in hospitals.

FAMOS was one of the first companies which was focused on developing, manufacturing and positioning of rotary heat sealing machines in the medical field. The FAMOS heat sealers are equipped with state of the art electronics and software and comply with the medical directives DIN 58953-7:2010, EN 868-5 and EN ISO 11607-2. All machines carry a CE mark and are TÜV certified.

Over time FAMOS has expanded its product range by manufacturing additional CSSD related stainless steel products like pre-cleaning stations, packing tables, ultrasonic cleaning baths, paper trolleys, baskets, trays, storage cabinets and racks, transport trolleys etc. Due to the globalization and dynamic acting markets it has become obligatory for medical manufacturing companies to be dynamical and flexible in production in order to fulfill customer specific requirements. FAMOS bv is well known for its customized and very often unique product solutions in the medical field.

In 1992 FAMOS bv also founded the German subsidiary FAMOS Medizintechnik Vertriebs GmbH in Straelen to optimize its product range and fulfill the needs of its customers even better. FAMOS GmbH manufactures sterilization/monitoring and documentation/traceability products like chemical indicators, Bowie Dick Tests, label guns and matching labels etc.

With all the experience and expertise which it has gained, FAMOS has become a key player for CSSD hospital equipment. Continuous improvement, high product quality, flexibility in production and a qualified after sales service has made it possible to establish a distributor network in over 50 countries. Our partners enjoy a trustful, long term cooperation which makes them well educated and competent with our products.

Please contact us for more information!

With kind regards,

Famos bv

Tom J.E. van Gardingen, Managing Director



ENGINEERING AND PRODUCTION



STERILIZATION/ MONITORING PRODUCTS

BOWIE & DICK TEST

With reference to the European Standard EN 285, the Bowie & Dick Test is a mandatory test for steam sterilizers.

This functionality test for steam sterilizers needs to be done at the beginning of the working day. After a successful pass of the Bowie & Dick Test the steam sterilizer can be released for use.

The type of Bowie & Dick Test that is required depends on the configuration of your load.

As a manufacturer Famos offers both types of tests: the Bowie & Dick Test Pack (for porous loads) as well as the Bowie & Dick Test Set including Helix test device (for hollow loads).

Compared to the BD Test Pack (porous loads) the Bowie & Dick Test Set simulates a hollow instrument and generates a bigger challenge for the steam sterilizer and the steam sterilization process.

The Bowie & Dick Test Pack and Bowie & Dick Test Set comply to EN ISO 11140-1 (type 2) as well as EN ISO 11140-4.



15.100.039

BOWIE & DICK TEST PACK for porous loads

- Accurate and reproducible results
- Tested against the original Bowie & Dick Pack
- Easy and fast interpretation of color change from yellow to black
- Easy documentation due to attached data input sheet
- Laminated indicator prevents any interaction with ink
- Ink is free of any toxic components



15.100.097

BOWIE & DICK HELIX TEST for hollow loads

- Accurate and reproducible results
- Tested against the original Bowie & Dick Pack by an independent micro biological-laboratory
- Best interpretation of color change from yellow to black
- Easy documentation of the self-adhesive indicator strip
- No waste like with Test Packs
- Ink is free of any toxic components

STERILIZATION/ MONITORING PRODUCTS



BOWIE & DICK TEST SET

- Suitable for pre-vacuum hospital steam sterilizers which are being used for the sterilization of hollow and porous loads



15.100.072

- Indicator in compliance with EN ISO 11140-1, type 2 and EN ISO 11140-4
- Simulation of worst case scenario
- Easy and fast interpretation of color change from yellow to black
- Easy documentation of the self-adhesive indicator strip
- Non-reversible indicator
- Reproducible results
- Ink is free of any toxic components
- Paper is high quality recycled paper
- Cost-effective and environmentally friendly

STERILIZATION/ MONITORING PRODUCTS

BOWIE & DICK TEST PACK

- Suitable for pre-vacuum hospital steam sterilizers (only for porous loads)



15.100.039

- Indicator in compliance with EN ISO 11140-1, type 2 and EN ISO 11140-4
- Good and easy documentation by means of attached data input sheet
- Non-reversible indicator
- Easy interpretation of color change from yellow to black
- Paper is high quality recycled paper
- Cost-effective and commercially priced

STERILIZATION/ MONITORING PRODUCTS



BOWIE & DICK HELIX TEST

- Suitable for pre-vacuum hospital steam sterilizers (only for hollow loads)
- Suitable for bench top steam sterilizers Class B



15.100.097

- Tested against the original Bowie Dick Pack by an independent micro-biological laboratory
- The Helix PCD is in compliance with EN ISO 11140-1, type 2 as well EN 867-5
- Easy documentation of the self-adhesive indicator strip
- Best interpretation of color change from yellow to black
- No waste like with Test Packs
- Ink is free of any toxic components
- Easy to use and document
- Cost-effective compared to Test Packs
- Commercially priced

STERILIZATION/ MONITORING PRODUCTS

BOWIE & DICK TEST FOR POROUS LOADS

Art. No.	Product	Description	Packed
15.100.039	famo/20/BDTPA	Bowie & Dick Test pack 1 indicator sheet yellow to black 1 Data input sheet	20

BOWIE & DICK HELIX TEST FOR HOLLOW AND POROUS LOADS

Art. No.	Product	Description	Packed
15.100.097	famo/100/BDH	Bowie & Dick Helix Test, for repeated use 100 chemical indicators 1 PCD (Helix) Teflon and 1 cotton bag 1 Operation manual and color reference card	100
15.100.098	famo/250/BDH	Bowie & Dick Helix Test, for repeated use 250 chemical indicators 1 PCD (Helix) Teflon and 1 cotton bag 1 Operation manual and color reference card	250

BOWIE & DICK TEST SET FOR HOLLOW AND POROUS LOADS

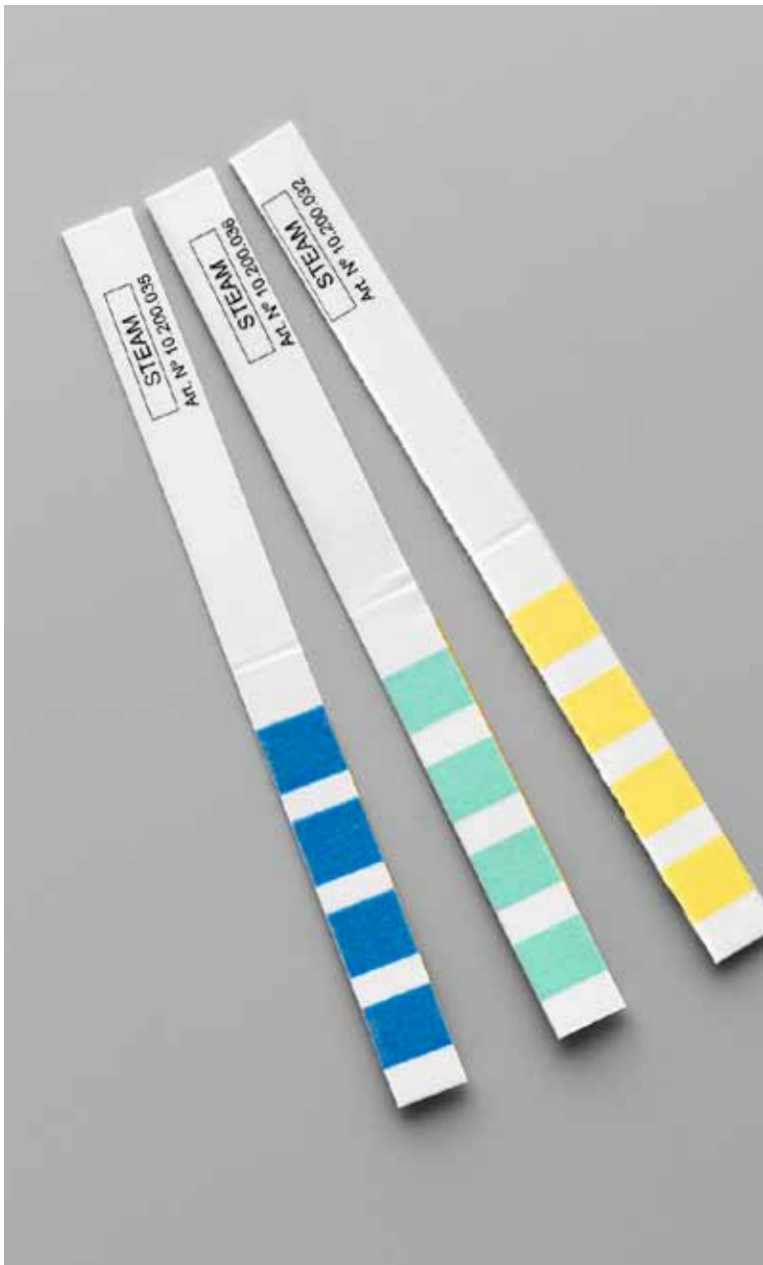
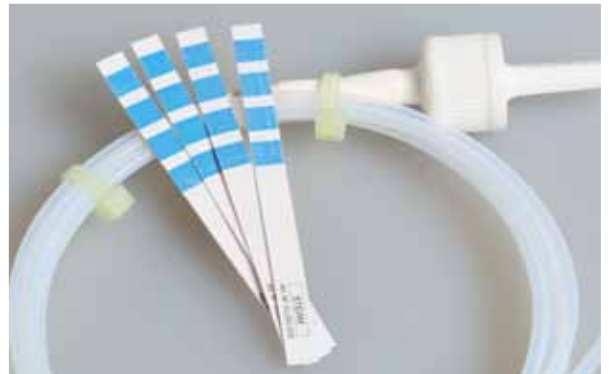
Art. No.	Product	Description	Packed
15.100.072	famo/100/BDM	Bowie & Dick Test, for repeated use 100 chemical indicators 1 PCD (Helix), stainless steel, 1 cotton bag 1 Operation manual and color reference card	100
15.100.074	famo/25/BDM	Bowie & Dick Test sample set 25 chemical indicators 1 PCD (Helix), stainless steel, 1 cotton bag 1 Operation manual and color reference card	25
15.100.050	famo/250/BDN	Bowie & Dick Test refill set for test 15.100.072 250 chemical indicators 1 Washer, 1 silicon connection piece 1 Cotton bag	250



STERILIZATION/ MONITORING PRODUCTS

LOT CONTROL TEST SETS FOR:

■ Steam 134°C / 3,5 minutes	15.100.090
■ Steam 134°C / 5,3 minutes	15.100.122
■ Steam 134°C / 7,0 minutes	15.100.123
■ Steam 134°C / 18,0 minutes (Prion)	15.100.095
■ Formaldehyde	15.100.231
■ Ethylene Oxide	15.100.099



- Helix PCD in accordance with EN 867-5 and ISO 11140-1
- Indicator in accordance with EN ISO 11140-1, typ 5
- Accurate and reproducible results
- Easy documentation of the self-adhesive indicator strip
- No waste like with Test Packs
- Ink is free of any toxic components
- Cost-effective and commercially priced

STERILIZATION/ MONITORING PRODUCTS



LOT CONTROL TEST SETS FOR STEAM STERILIZATION

Art. No.	Product	Description	Packed
15.100.090	famo/100/D	Lot control test set for repeated use 134°C / 3,5 Min. 100 chemical indicators, 1 PCD (Helix), Teflon, 1 cotton bag, 1 operation manual and color reference card	100
15.100.100	famo/400/D	Lot control test set for repeated use 134°C / 3,5 Min. 400 chemical indicators, 1 PCD (Helix), Teflon, 1 cotton bag, 1 operation manual and color reference card	400
15.100.091	famo/25/D	Lot control test sample set 134°C / 3,5 Min. 25 chemical indicators, 1 PCD (Helix), Teflon, 1 cotton bag, 1 operation manual and color reference card	25
15.100.122	famo/100/D5	Lot control test set for repeated use 134°C / 5 Min. 100 chemical indicators, 1 PCD (Helix), Teflon, 1 cotton bag, 1 operation manual and color reference card	100
15.100.123	famo/100/D7	Lot control test set for repeated use 134°C / 7 Min. 100 chemical indicators, 1 PCD (Helix), Teflon, 1 cotton bag, 1 operation manual and color reference card	100
15.100.124	famo/400/D7	Lot control test set for repeated use 134°C / 7 Min. 400 chemical indicators, 1 PCD (Helix), Teflon, 1 cotton bag, 1 operation manual and color reference card	400
15.100.095	famo/100/D Prion	Lot control test set for repeated use 134°C / 18 Min. 100 chemical indicators, 1 PCD (Helix), Teflon, 1 cotton bag, 1 operation manual and color reference card	100

LOT CONTROL TEST SET FOR FORMALDEHYDE AND ETHYLENE-OXIDE STERILIZATION

Art. No.	Product	Description	Packed
15.100.231	famo/100/FORM	Lot control test set 100 chemical indicators Formaldehyde, 1 PCD (Helix), Teflon	100
15.100.141	famo/200/FORM	Lot control test set 200 chemical indicators Formaldehyde, 1 PCD (Helix), Teflon	200
15.100.099	famo/100/EO	Lot control test set 100 chemical indicators Ethylene Oxide, 1 PCD (Helix), Teflon	100
15.100.114	famo/200/EO	Lot control test set 200 chemical indicators Ethylene Oxide, 1 PCD (Helix), Teflon	200
15.100.125	Helix test tube	Helix test tube Polypropylene for lot control test set 1 Test tube, 1,5 meter PFTE hose	1
10.100.016	Helix test tube	Helix test tube stainless steel for B&D Test with 4 meter PFTE hose	1

STERILIZATION/ MONITORING PRODUCTS

INTEGRATORS



15.100.136

STEAM INTEGRATORS TYPE 5

Steam Integrators have been developed for several time/temperature combinations. Integrators are packed in pouches, packs or containers together with the instruments which are to be sterilized. By doing this, they will indicate whether all sterilization conditions are met inside the pack or container.

This gives an assurance to the operating room nurses and doctors about the sterility of the instruments just before use. It is easy to check the color change as the reference color is printed on the integrator.

The integrators comply with EN 867 type D and EN ISO 11140-1, type 5.



15.100.077

THREE PHASE INTEGRATORS TYPE 6

Three Phase Sequential integrators have been especially designed to check the time and temperature combination in three different steps.

Each integrating indicator is validated to another time/temperature combination. Like the steam integrators they are packed together with the instruments in packs or containers. The Integrator complies with EN ISO 11140-1, type 6.

STERILIZATION/ MONITORING PRODUCTS



15.100.078



15.100.263

STEAM PRION INTEGRATORS

Famos Prion integrators have been especially designed to check the time and temperature combination for prion cycles 134° C -18 minutes. The integrators comply with EN ISO 11140-1, type 5.

SELF-ADHESIVE INTEGRATORS FOR STEAM AND DRY HEAT

Self-adhesive Integrators have been developed in order to have an integrator which can be stuck into the patient records in the operation room.

They are packed in a dispenser box for a simple removal. The end color is printed on the integrator for easy reference. It can be used for documentation purposes. For this reason each integrator provides additional space for notes like expiry date etc.

The self-adhesive integrators comply with ISO-11140-1, type 4 and are available for STEAM and Dry Heat.

**All Famos integrators
are easy to
interpret and document**

STERILIZATION/ MONITORING PRODUCTS

INTEGRATORS

- Three Phase Sequential Integrator 134°C / 3,5 Min.
- Steam Integrator 134°C / 3,5 Min.
- Steam Integrator / Prion 134°C / 18 Min.

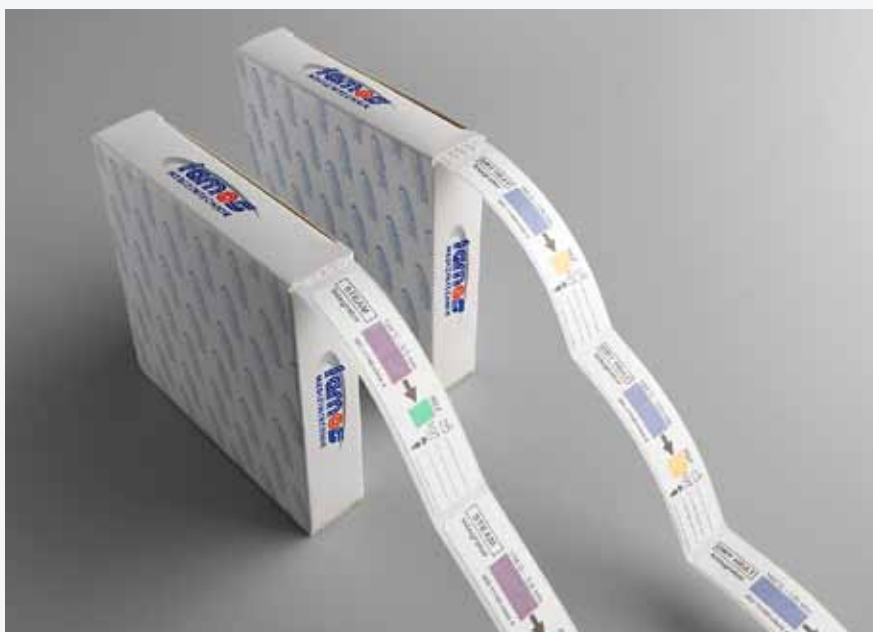


15.100.077

- Steam Integrator in compliance with EN 867 type D and EN ISO 11140-1, type 5
- Steam Prion Integrator in compliance with EN ISO 11140-1, type 5
- Three Phase Integrator in compliance to EN ISO 11140-1, type 6
- Packed in dispenser boxes, easy to take out

SELF-ADHESIVE INTEGRATORS

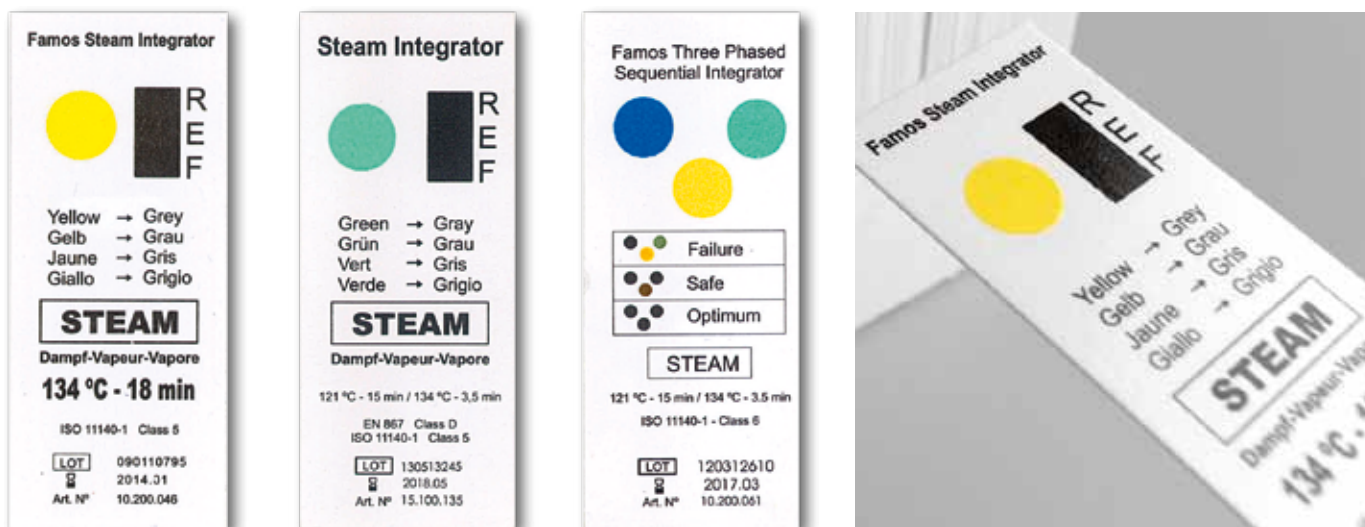
- For steam and dry heat
- Note: Plasma, EO and FO Integrators are under development



15.100.263

- Integrators in compliance to EN ISO 11140-1, type 4
- Easy to use and document
- Non-reversible indicator
- Reproducible results
- Ergonomically packed

STERILIZATION/ MONITORING PRODUCTS



CHEMICAL INTEGRATORS

Art. No.	Product	Description	Packed
15.100.135	STEAM Integrator	Steam integrator for 134°C / 3,5 Min. 250 chemical integrators EN ISO 11140-1, type 5 Package: Paper wrapping	250
15.100.136	STEAM Integrator	Steam integrator for 134°C / 3,5 Min. 250 chemical integrators EN ISO 11140-1, type 5 Package: Acryl box	250
15.100.137	STEAM Integrator	Steam integrator for 134°C / 3,5 Min. 250 chemical integrators EN ISO 11140-1, type 5 Package: Folded box	250
15.100.064	STEAM PRION Integrator	Steam Prion Integrators for 134°C / 18 Min. 250 chemical integrators EN ISO 11140-1, type 5 Package: Folded box	250
15.100.078	STEAM PRION Integrator	Steam Prion Integrators for 134°C / 18 Min. 250 chemical integrators EN ISO 11140-1, type 5 Package: Acryl box	250
15.100.065	3 PHASE Integrator	Three phase steam integrator for 134°C / 3,5 Min. 250 chemical integrators EN ISO 11140-1, type 6 Package: Folded box	250
15.100.077	3 PHASE Integrator	Three phase steam integrator for 134°C / 3,5 Min. 250 chemical integrators EN ISO 11140-1, type 6 Package: Acryl box	250

SELF-ADHESIVE INTEGRATORS

Art. No.	Product	Description	Packed
15.100.262	Dry Heat Integrator	Integrator for dry heat for 160° C / 20 Min. 500 chemical integrators EN ISO 11140-1, type 4 Dimensions: 76x18mm, self-adhesive. Package: folded box	500
15.100.263	Dry Heat Integrator	Integrator for dry heat for 134° C / 3,5 Min. 500 chemical integrators EN ISO 11140-1, type 4 Dimensions: 76x18mm, self-adhesive. Package: folded box	500



STERILIZATION DOCUMENTATION AND TRACEABILITY



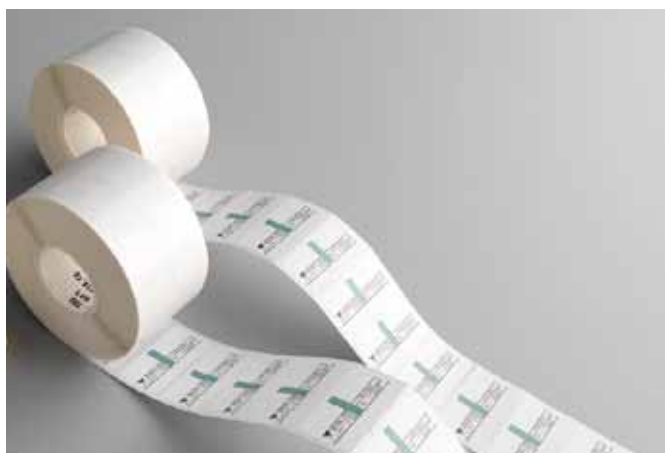
STERILIZATION DOCUMENTATION AND TRACEABILITY

DOCUMENTATION LABELS

Label materials for sterilization purposes developed by Famos

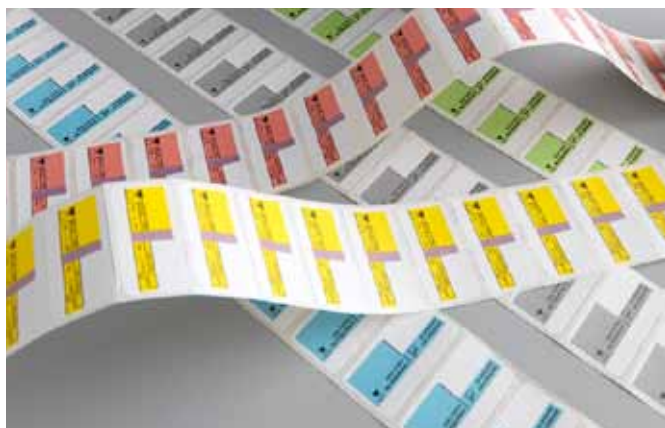
The self-adhesive labels are the result of our experiences and extensive testing of the past few years

THE DETAILED TEST RESULTS



Upper material

- Water and moisture repellent
- Resistant to high temperatures
- No shrinkage during sterilization
- Suitable for thermo transfer printers
- Suitable to be written on with Steri marker or pen
- Suitable for inkjet printers
- Prevents writings / printings from bleeding through on the back of the label
- No interference of chemical indicators by stained colors or texts



Adhesive

- high grammage / square meter
- Synthetic Rubber
- Stick well to all materials
- Migration of toxic substances is not possible
- Proven to be skin friendly by tests
- Reach and ROHS certified
- Tested up to 134° C - 18 minutes



Indicator

- Use of standardized EN 980 symbols
- Complies to the indicator classification according to EN ISO 11140-1
- EN ISO 11140 testing by an independent laboratory
- No heavy metals or other chemicals

Traceability

- Product identification

STERILIZATION DOCUMENTATION AND TRACEABILITY



„Your partner for
highest quality standards and
special requirements.“



STERILIZATION DOCUMENTATION AND TRACEABILITY



SELF-ADHESIVE LABELS FOR DOCUMENTATION OF THE STERILIZATION PROCESS AND FOR TRACEABILITY PURPOSES



Computer labels

Computer labels are called this way because they are printed with thermotransfer or pinfeed printers connected to a computer. These labels are used for marking the trays and/or containers. Any data you need can be printed on the labels.

By sticking it onto the packed instrument tray or container, the chemical indicator that is on the label indicates if the container is sterilized or not. Labels are available for all sterilization methods like steam, ethyleneoxide, formaldehyde etc.



15.100.500

Patient documentation labels

For a complete documentation the patient label is being placed in the center of each package or container. When the instrument tray or container is being opened in the operation room, the patient label is being taken out, the data of the patient is being entered and documented in the file.

The steam integrator that is integrated on the label shows the operation team if the content of the package or container has been sterilized by steam and if the parameters have been met.

STERILIZATION DOCUMENTATION AND TRACEABILITY



15.100.221

Process Indicators (Spots)

The Famos process indicators only indicate that the pack has been into the sterilization cycle, but doesn't measure the parameters of the sterilizer to show if the sterilization was successful. Process indicators should be on the outside of pouches or packages to make a distinct in between the sterilized and non-sterilized items. These spots are available for Steam and Formaldehyde processes and come as a roll of single labels packed in an easy dispenser box.



Steam dots with a diameter of 10mm are used to put on container locks.

SELF-ADHESIVE LABELS

Art.-No.	Product	Description	Packed
15.500.522	Label Blank	Double label blank, 2 times self-adhesive Dimensions: 75 x 35mm, core: 76 mm 1.000 labels per roll	1 Roll
15.500.530	Label Steam	Double label with steam indicator ISO 11140-1, Type 1, Indicator change: red to green sterilized Dimensions: 70 x 35mm, core: 40mm, 1.000 labels per roll	1 Roll
15.500.575	Label Steam	Double label with steam indicator and text ISO 11140-1, Type 1, Indicator on the right side Indicator changing: red to green sterilized Dimensions: 70 x 60mm, core: 45mm, Slotting on the left side, Perforation between each label, 1.000 labels per roll	1 Roll
15.100.242	Endless label	Endless double label 71 mm Slotting backside 15mm from the edge with steam indicator, ISO 11140-1, Type 1, Indicator changing: red to green sterilized, text: black, Core: 40mm, roll = 70 mtr., each roll separately packed	1 Roll

For more information please do not hesitate to contact us

STERILIZATION DOCUMENTATION AND TRACEABILITY

COMPUTER LABELS MARKING OF PACKAGES / CONTAINERS

- Available with Steam- / Ethylene Oxide- / Formaldehyde- / VH_2O_2 - and Dry Heat - process indicators



- In compliance with EN ISO 11140-1, type 1
- Guaranteed Latex free
- Available for Thermotransfer- or pinfeed printers
- High adhesive strength
- Available in single- / double self-adhesive
- Many different sizes
- Product modification to customer requirements is possible. Please contact us!

PATIENT DOCUMENTATION LABELS

- Single self-adhesive labels
- Chainform self-adhesive labels with pinfeed



- In compliance with EN ISO 11140-1, type 4
- Guaranteed Latex free
- Printable label
- Self-adhesive label for easy documentation
- 4 different data can be printed including barcode

STERILIZATION DOCUMENTATION AND TRACEABILITY



SPOTS

- Available with Steam and FO process indicators



- In compliance with EN ISO 11140-1, type 1
- packed in easy dispenser box
- High adhesive strength
- famolabel™ material
- Suitable for sterilization conditions
- Guaranteed Latex free

PATIENT DOCUMENTATION AND COMPUTER LABELS (STANDARD)

Art. No.	Product	Description	Packed
15.100.501	famo/500/PED/kl	Patient documentation label with steam indicator, 500 labels in size 100x38 mm	500
15.100.500	famo/500/PED/com	Patient documentation label with steam indicator for printers, 500 labels with perforated edge in size 90x35 mm	500
15.100.180	famoDate 200	Computer labels with steam indicator for printers, 1000 labels with perforated edge in size 88x35 mm	1000
15.100.190	famoDate 300	Self-adhesive computer label with steam indicator for printers, 3000 labels in size 60x38 mm	3000
15.100.190/L	famoDate 300/L	Self-adhesive computer label with steam indicator for printers, 4000 labels in size 59x36 mm	4000

SPOTS

Art. No.	Product	Description	Packed
15.100.221	FORM-spots	Self-adhesive spot with process indicator for Formaldehyde, 250 Spot-indicators in dispenser box	250
15.100.222	STEAM-spots	Self-adhesive spot with process indicator for steam, 250 Spot-indicators in dispenser box	250

STERILIZATION DOCUMENTATION AND TRACEABILITY

LABEL GUN LABELS WITHOUT INDICATOR



15.300.141

Double coloured label gun labels without indicators are available for documentation and traceability purposes. For pouches with a printed process indicator you may not need to use a label with indicator. Famos label gun labels are available in 6 different colors to provide easy recognition in the sterile storage. By giving different colors to months, one can easily recognize the packages or containers on stock which are having a shorter expiry date. The advantage of having a double label is that one can use the label for documentation purposes by sticking it into the patient's file or logbook.

LABEL GUN INDICATORS WITH INDICATOR



15.300.164

Double labels with process indicators have been developed to provide sterilization control and traceability for packages and containers. Labels are available for various sterilization conditions and have Steam, FO, EO or VH2O2 process indicators to identify which packs have been exposed to the sterilization cycle.

Necessary data such as sterilizer number, packing and expiry date can be printed on the label. The labels of each used set can be documented in the patient's file for record keeping.

LABEL GUN



15.400.250

Labelling device which has been especially developed for Famos double labels, for marking of packages and containers. The Famos label gun can print 5 different data on the label such as sterilizer type, sterilizer number, lot number, packing and expiry date with its alphanumeric print head.

STERILIZATION DOCUMENTATION AND TRACEABILITY

2-LINE LABEL GUN AND DOUBLE MARKING LABELS

- With Steam- / Ethylene Oxide-Formaldehyde- / VH_2O_2 process indicators
- Double labels in different colors (please contact us!)

STEAM
FORM
EO
VH_2O_2



- Indicators comply to EN ISO 11140-1, type 1
- Labels are suitable for sterilization conditions
- Easy to use and load label gun
- High adhesive strength and Latex free
- Label gun can print 5 different data

STERILIZATION DOCUMENTATION AND TRACEABILITY



Art. No. 15.500.517



Art. No. 15.500.516



Art. No. 15.500.515



Art. No. 15.500.518



Art. No. 15.500.524



Art. No. 15.500.523



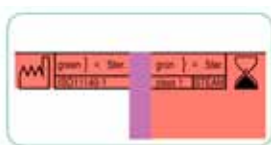
Art. No. 15.500.519



Art. No. 15.500.525



Art. No. 15.300.275



Art. No. 15.300.276



Art. No. 15.300.277



Art. No. 15.300.240



Art. No. 15.300.164



Art. No. 15.300.169



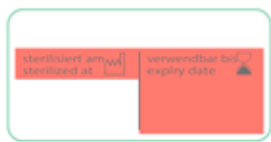
Art. No. 15.300.447



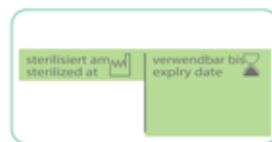
Art. No. 15.300.171



Art. No. 15.300.141



Art. No. 15.300.142



Art. No. 15.300.143



Art. No. 15.300.144



Art. No. 15.300.145



Art. No. 15.300.146



Art. No. 15.300.327



Art. No. 15.300.218

SELF-ADHESIVE DOUBLE MARKING LABELS WITH COLORED TEXT

Art. No.	Product	Description	Packed
15.500.515	Label Text Red	Double marking label "STERILIZED" red, roll with 650 labels each	14
15.500.516	Label Text Green	Double marking label "STERILIZED" green, roll with 650 labels each	14
15.500.517	Label Text Blue	Double marking label "STERILIZED" blue, roll with 650 labels each	14
15.500.518	Label Text Black	Double marking label "STERILIZED" black, roll with 650 labels each	14
15.500.519	Label Text Red	Double marking label "EXPIRES" red, roll with 650 labels each	14
15.500.523	Label Text Green	Double marking label "EXPIRES" green, roll with 650 labels each	14
15.500.524	Label Text Blue	Double marking label "EXPIRES" blue, roll with 650 labels each	14
15.500.525	Label Text Black	Double marking label "EXPIRES" black, roll with 650 labels each	14

STERILIZATION DOCUMENTATION AND TRACEABILITY



SELF-ADHESIVE DOUBLE MARKING LABELS WITHOUT INDICATOR 37x19 MM

Art. No.	Product	Description	Packed
15.400.250	Label gun	Labelling device, for printing data on labels For use with double marking labels	12
15.300.141	Label blue	Double marking label, Roll with 750 blue labels each	12
15.300.142	Label red	Double marking label, Roll with 750 red labels each	12
15.300.143	Label green	Double marking label, Roll with 750 green labels each	12
15.300.144	Label yellow	Double marking label, Roll with 750 yellow labels each	12
15.300.145	Label orange	Double marking label, Roll with 750 orange labels each	12
15.300.146	Label light grey	Double marking label, Roll with 750 l. grey labels each	12
15.300.327	Label violet	Double marking label, Roll with 750 violet labels each	12
15.300.218	Label white	Double marking label, Roll with 750 white labels each	12

SELF-ADHESIVE DOUBLE MARKING LABELS WITH INDICATOR 37x19 MM

Art. No.	Product	Description	Packed
15.300.164	Label STEAM Green	Double marking labels with steam indicator Color change from green to violet, Roll with 750 labels each	12
15.300.169	Label STEAM Red	Double marking labels with steam indicator Color change from red to green, Roll with 750 labels each	12
15.300.171	Label EO	Double marking labels with Ethylene-Oxide indicator Color change from white to brown, Roll with 750 labels each	12
15.300.447	Label Plasma	Double marking label, Roll with 500 Plasma labels each	14
15.300.172	Label FO	Double marking label, Roll with 750 FO labels each	12

SELF-ADHESIVE DOUBLE MARKING LABELS WITH STEAM INDICATOR 37x19 MM & COLOR

Art. No.	Product	Description	Packed
15.300.275	Label STEAM blue	Double marking labels with steam indicator Color change from red to green, Rolls with 750 blue labels each	12
15.300.276	Label STEAM red	Double marking labels with steam indicator Color change from red to green, Rolls with 750 red labels each	12
15.300.277	Label STEAM green	Double marking labels with steam indicator Color change from red to green, Rolls with 750 green labels each	12
15.300.240	Label STEAM yellow	Double marking labels with steam indicator with print: "Green = sterilized", Rolls with 750 labels each	12

SELF-ADHESIVE DOUBLE MARKING LABELS WHITE, WITHOUT PRINT 37X19 MM

Art. No.	Product	Description	Packed
15.300.288	Label blank	Double marking labels White, without print, Roll with 750 labels each	12

STERILIZATION DOCUMENTATION AND TRACEABILITY

3-LINE LABEL GUN AND DOUBLE MARKING LABELS

■ 3-Line label gun, labels with steam process indicators

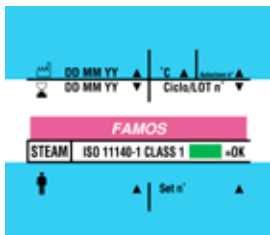


- Indicators comply to EN ISO 11140-1, type 1
- Printing 7 different data, such as expiry date, production date, personnel number, cycle degree, set. no. etc.
- Labels are suitable for sterilization conditions
- Easy to use and load label gun
- High adhesive strength and Latex free
- Famolabel™ material

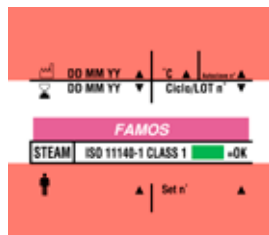
SELF-ADHESIVE DOUBLE LABELS FOR 3-LINE LABEL GUN

Art. No.	Product	Description	Packed
15.300.255	FamoSteri Label Gun	Labelling device for 3-line STEAM labels 3-lines printing, 7 data entry fields	1
15.300.500	3-Line STEAM	3-line double marking label with steam indicator Color change from red to green, "FAMOS" on indicator Roll with 600 labels each	15
15.300.503	3-Line- FO	3-line double marking label with Formaldehyde indicator Color change from violet to green Roll with 600 labels each	15

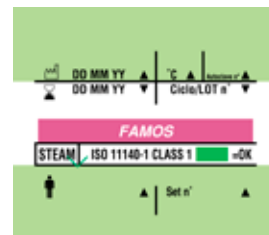
STERILIZATION DOCUMENTATION AND TRACEABILITY



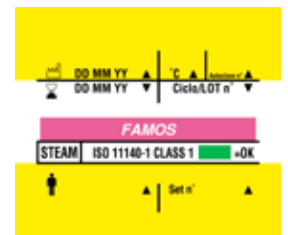
Art. No. 15.300.509



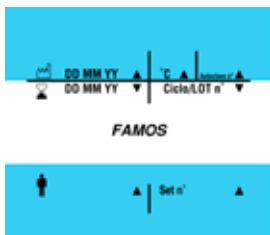
Art. No. 15.300.511



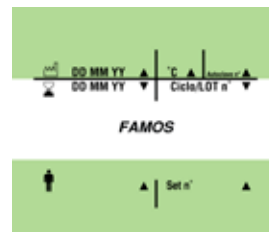
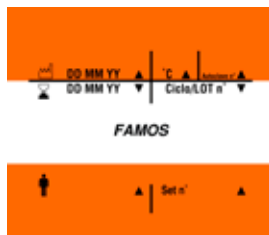
Art. No. 15.300.508



Art. No. 15.300.507



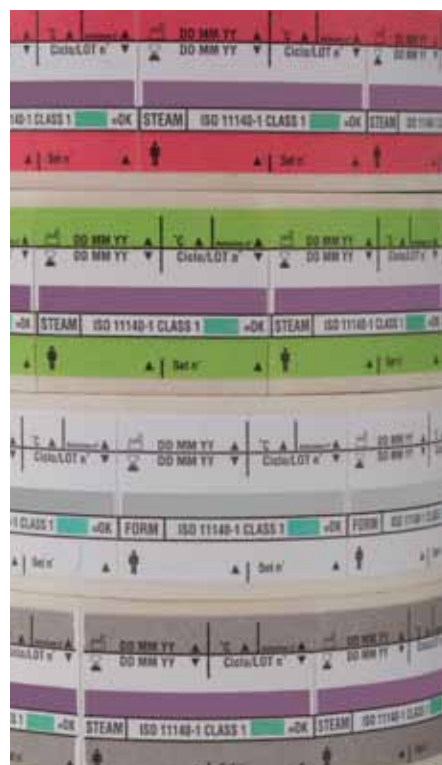
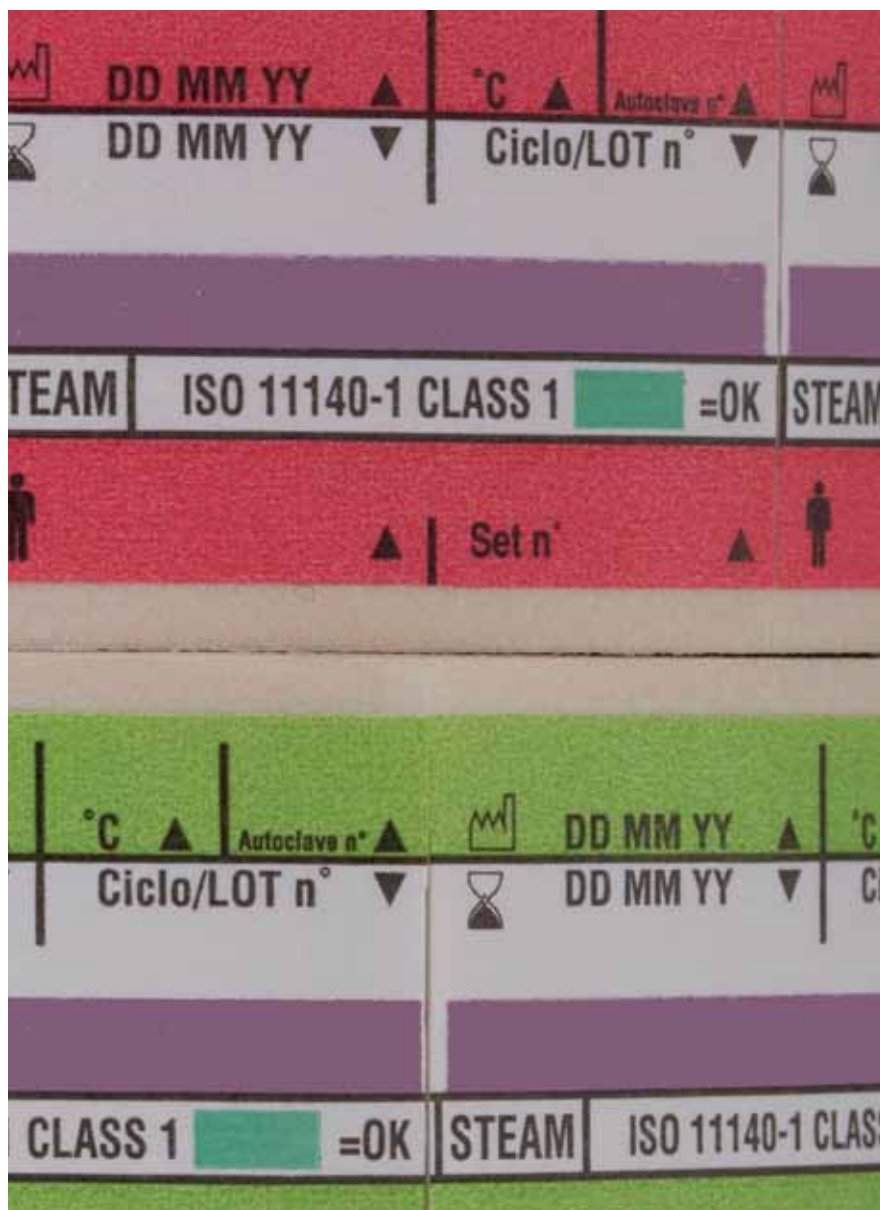
Art. No. 15.300.506



- Production date
- Expiry date
- Lot number
- Personnel number
- Autoclave number
- Set number
- Cycle degree



STERILIZATION DOCUMENTATION AND TRACEABILITY



SELF-ADHESIVE DOUBLE LABELS WITH STEAM INDICATOR FOR 3-LINE LABEL GUN

Art. No.	Product	Description	Packed
15.300.506	3-Line STEAM grey	3-line double marking label grey with steam indicator change from red to green, Roll with 600 labels each	15
15.300.507	3-Line STEAM yellow	3-line double marking label yellow with steam indicator change from red to green, Roll with 600 labels each	15
15.300.508	3-Line STEAM green	3-line double marking label green with steam indicator change from red to green, Roll with 600 labels each	15
15.300.509	3-Line STEAM blue	3-line double marking label blue with steam indicator change from red to green, Roll with 600 labels each	15
15.300.510	3-Line STEAM orange	3-line double marking label orange with steam indicator change from red to green, Roll with 600 labels each	15
15.300.511	3-Line STEAM red	3-line double marking label red with steam indicator change from red to green, Roll with 600 labels each	15

STERILIZATION DOCUMENTATION AND TRACEABILITY



CONTAINER LABELS

Container labels are designed to be glued over the lid of containers. They are a very suitable alternative to the often used steam tapes. The advantage is that they don't leave any residue so containers and their lids are easily cleaned. Container labels are having steam process indicators by which one can differentiate sterilized and non sterilized containers. Following data can be documented on the container labels for future reference:

Contents of the container, packing date, expiry date, set and lot number etc.

CONTAINER SEAL LABELS (double & single)

Container seal labels have been especially designed to safeguard the container from being opened by unauthorized personnel. These labels are offered both as a single and as a double label. The function of the single label is to safeguard and mark containers. Double labels have the same purpose but they can also be used for documentation purposes as the label can be stuck into the patients file or OR file.

Following data can be documented on the container labels for future reference:

Contents of the container, packing date, expiry date, set and lot number etc.



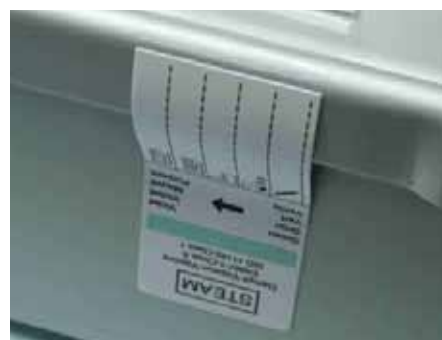
STERILIZATION DOCUMENTATION AND TRACEABILITY



CONTAINER LABELS



- Container adhesive labels, self-adhesive, but removable
- Container seal labels single or double



15.300.018

- Comply to EN ISO 11140-1, type 1
- Double seal labels for easy documentation
- High adhesive strength and Latex free
- Famolabel™ material
- Suitable for sterilization conditions

STERILIZATION DOCUMENTATION AND TRACEABILITY



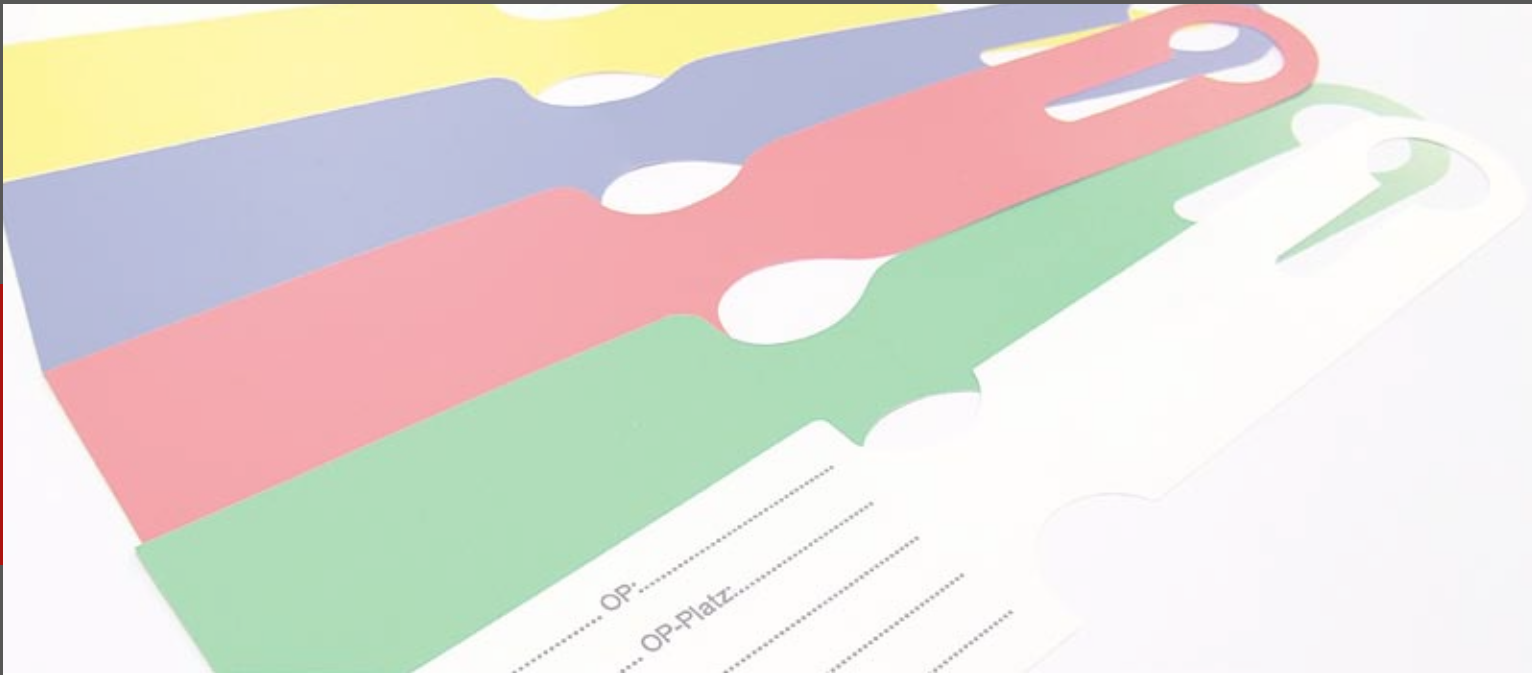
CONTAINER SEAL LABELS (DOUBLE & SINGLE)

Art. No.	Product	Description	Packed
15.300.018	Container seal	Container seal label with pin and steam indicator Color change from green to violet 1000 self-adhesive labels	1000
15.300.042	Container Seal double	Double container seal label with pin and steam indicator Color change from red to green 500 self-adhesive labels	500

CONTAINER LABEL

Art. No.	Product	Description	Packed
15.300.084	Container label	Container label with steam indicator Color change from red to green Self-adhesive, but removable, 500 labels	500

STERILIZATION DOCUMENTATION AND TRACEABILITY



INSTRUMENT PROTECTION DESIGNED FOR STERILIZATION CONDITIONS

■ Size: 50 x 125 mm



15.100.055

- Guaranteed protection of sharp and fragile surgical instruments
- Protection due to better fit with fragile instruments
- Designed for sterilization conditions

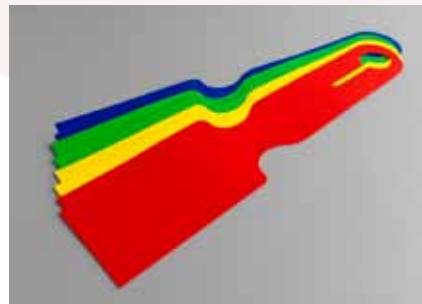
INSTRUMENT PROTECTION

Art. No.	Product	Description	Packed
15.100.055	Famo Protector S	Protection cover for the sterilization of sharp, fragile instruments, 100 pieces, size 50 x 125 mm	100

STERILIZATION DOCUMENTATION AND TRACEABILITY

TRAY LABELS

- Dimensions: 90 x 50 mm
- Total length: 245 mm



- Available in 4 different colors
- Suitable for steam sterilization conditions
- Can be printed with text
- Product modification to customer's wishes possible

TRAY LABELS FOR MARKING OF BASKETS AND TRAYS AT THE CSSD

Art. No.	Product	Description	Packed
15.300.059	Tray label „defect“	Label for marking defected trays/baskets 1000 labels, dimensions: 50 x 240 mm	1000
15.300.060	Tray label „repair“	Label for marking repaired trays/baskets 1000 labels, dimensions: 50 x 240 mm	1000
15.300.061	Tray label red	Label for marking of trays/baskets, color: red 500 labels, dimensions: 50 x 240 mm	500
15.300.062	Tray label green	Labels for marking of trays/baskets, color: green 500 labels, dimensions: 50 x 240 mm	500
15.300.063	Tray label blue	Label for marking of trays/baskets, color: blue 500 labels, dimensions: 50 x 240 mm	500
15.300.064	Tray label yellow	Label for marking of trays/baskets, color: yellow 500 labels, dimensions: 50 x 240 mm	500
15.300.085	Suitcase label	Suitcase label white, with text 1000 labels, dimensions: 50 x 240 mm	1000
15.300.087	Suitcase label	Suitcase label white, blank 1000 labels, dimensions: 50 x 240 mm	1000

STERILIZATION DOCUMENTATION AND TRACEABILITY

CSSD MARKERS

■ Famo PEN black, green, red and blue



15.100.088

- Special non-toxic ink which is quick to dry and non-fading
- Long lasting ink with 3 years expiry date
- Easy writing with very fine tip and constant quality
- Designed for sterilization conditions

CSSD MARKERS

Art. No.	Product	Description	Packed
15.100.081	famoPEN black	For marking CSSD materials 6 pens in black	6
15.100.084	famoPEN red	For marking CSSD materials 6 pens in red	6
15.100.085	famoPEN blue	For marking CSSD materials 6 pens in blue	6
15.100.087	famoPEN green	For marking CSSD materials 6 pens in green	6
15.100.088	famoPEN sample set	For marking CSSD materials 4 pens in black, red, blue and green	4

STERILIZATION DOCUMENTATION AND TRACEABILITY

THERMO TRANSFER ROLLS

- Available in 3 qualities
- Wax
- Wax / Resin
- Resin



- Available for all major printing brands
- Single packed or in combination with labels
- Available in all dimensions
- Suitable for printing Famolabel™ material

THERMO TRANSFER ROLLS

Art. No.	Product	Description	Packed
15.100.234	Wax / Resin	For Zebra / Eltron / Bizerba / Printronix printers Dimensions: 100 mm x 300 mtr., Ø 25 mm, OW*	10
15.100.243	Wax / Resin	For Eltron / Zebra TLP 2242 printers Dimensions: 110 mm x 91 mtr., Ø 12,5 mm, OW*	25
15.100.247	Resin	For Toshiba SX / TEC B472 printer Dimensions: 110 mm x 600 mtr., Ø 25 mm, OW*	5
15.100.251	Wax / Resin	For Datamax / Intermec / Sata printers Dimensions: 100 mm x 300 mtr., Ø 25 mm, IW**	25
15.300.237	Wax / Resin	For Zebra TLP 2824 printer Dimensions: 56,9 mm x 74 mtr., Ø 12,5 mm, OW*	24
15.300.241	Wax / Resin	For Zebra / Eltron / Bizerba / Printronix printers Dimensions: 110mm x 450 mtr., Ø 25 mm, OW*	10
15.300.242	Resin	For Zebra TLP 2824 printer Dimensions: 56,9 mm x 74 mtr., Ø 12,5 mm, OW*	24
15.300.246	Wax / Resin	For Zebra / Eltron / Bizerba / Printronix 54M printers Dimensions: 110 mm x 300 mtr., Ø 25 mm, OW*	10
15.300.269	Wax / Resin	For Zebra / Eltron G-Serie / TLP 2844, 3844 printers Dimensions: 110 mm x 70 mtr., Ø 12,5 mm	25
15.300.279	Wax / Resin	For Toshiba SX / BSX 4 printers Dimensions: 110 mm x 600 mtr., Ø 25 mm, OW*	5
15.300.294	Resin	For Zebra / Eltron G-Serie / TLP 2844, 3844 printers Dimensions: 55 mm x 74 mt., Ø 12,5 mm, OW*	25
15.300.306	Wax / Resin	For Toshiba B443 / SV4T printers Dimensions: 110 mm x 300 mtr., Ø 25 mm, OW*	10

* OW = Outside winding, ** IW = Inside winding

STERILIZATION DOCUMENTATION AND TRACEABILITY

TAPE WITH/WITHOUT INDICATOR

- Latex free tape
- Standard tack / stickiness (white)
- High adhesive strength (blue)
- Available in 3 different sizes (widths): 19, 25, 50 mm



- Indicator in compliance to ISO 11140-1, type 1
- Latex free
- Available in 3 different sizes (widths): 19, 25, 50 mm
- Each roll packed separately
- Designed for sterilization conditions
- Cost-effective and commercially priced

TAPE WITH / WITHOUT INDICATOR

Art. No.	Product	Description	Packed
15.300.005	Tape 19	19 mm width tape, without indicator 50 m/roll	48
15.300.006	Tape 19/Ind.	19 mm width tape, including steam process indicator 50 m/roll	48
15.300.007	Tape 25	25 mm width tape, without indicator 50 m/roll	36
15.300.008	Tape 25/Ind.	25 mm width tape, with steam process indicator 50 m/roll	36
15.300.013	Tape blue 19	19 mm width tape, without indicator Color: blue, with high adhesive strength, 50 m/Roll	48
15.300.022	Tape blue 25	25 mm width tape, without indicator Color: blue, with high adhesive strength, 50 m/Roll	36

STERILIZATION DOCUMENTATION AND TRACEABILITY



TAPE DISPENSERS

- For 1 roll of up to 25 mm wide
- For 2 rolls of up to 25 mm wide
- For 3 rolls of up to 25 mm wide

- Extra weight in the bottom to guarantee a stable working platform
- A heavy stand with or without elevation is available as an option for when a heavier tape dispenser is required
- Protection cap to protect the knife when not in use

TAPE DISPENSERS AND ACCESSORIES

Art No.	Product	Description	Packed
15.120.023	TDSBM	Single blue tape dispenser with metal housing for 1 roll up to 25mm wide	1
15.120.024	TDDBM	Double blue tape dispenser with metal housing for 2 rolls up to 25mm wide	1
15.120.025	TDTBM	Triple blue tape dispenser with metal housing for 3 rolls up to 25mm wide	1
50.101.905	Heavy stand	Stainless steel heavy stand of 1,5 kilos	1
50.102.008	Elevated heavy stand	Stainless steel heavy stand of 1,5 kilos with elevation	1

„Manufacturer of sealing machines for more than 40 years“

Already in the 70's Famos specialized in the development, production and marketing of heat sealers for the medical market.

Up until now FAMOS tries to be the pioneer in this field. This is being reflected by the new PROTEC series which is being characterized by a hygienical and innovative design, state-of-the-art software and technology as well as compliance to DIN 58953-7:2010, EN 868-5 and EN ISO 11607-2.

All Famos sealers have a CE sign and the rotary sealers are also TÜV certified.



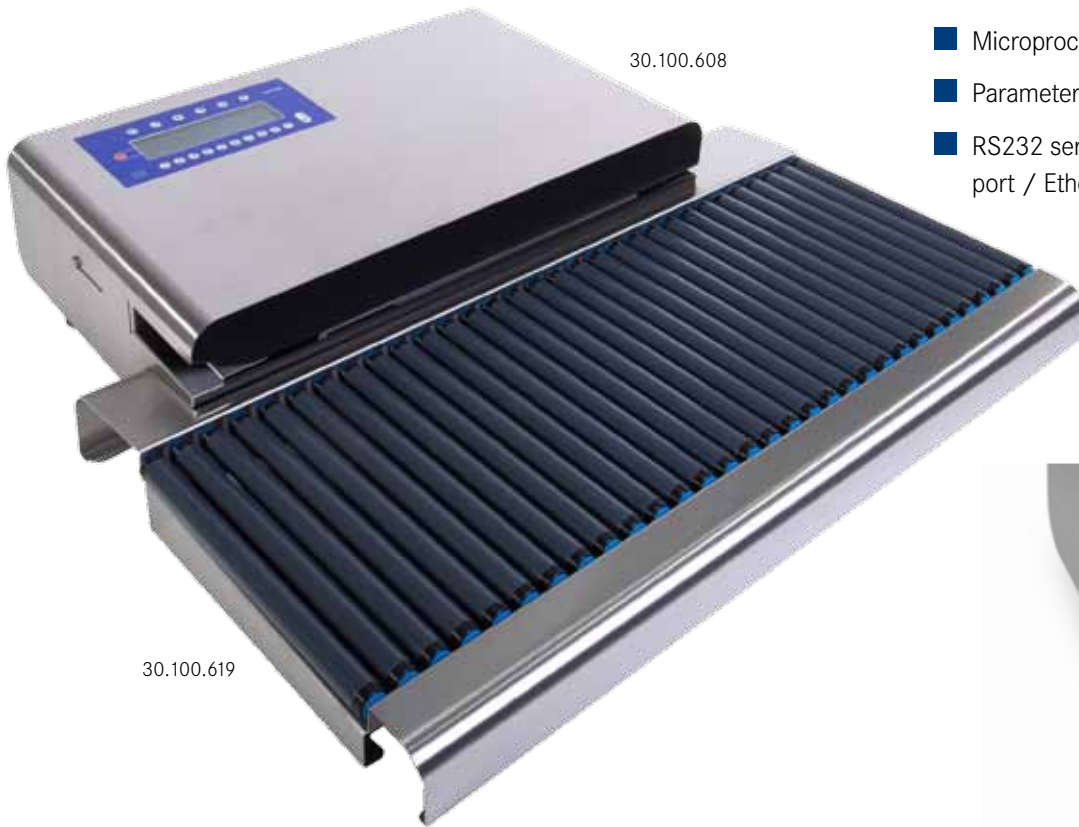
PROTEC Sealers

PACKING, PROCESS VALIDATION AND ACCESSORIES



PACKING, PROCESS VALIDATION AND ACCESSORIES

HEAT SEALERS



- Easy to read LCD-Display and simple menu navigation through the keyboard
- Microprocessor controlled
- Parameter control and USB port
- RS232 serial communication port / Ethernet connection



ROTARY HEAT SEALERS

As one of the leading manufacturers in the medical market it is important to recognize trends and customer needs and to respond to them. Because of this Famos has designed the PROTEC series.

PROTEC has been derived from the word “protect” and symbolizes the high level of protection that is created by the seal made with the FAMOS heat sealers. The PROTEC series distinguishes itself by its innovative design and technical features. The housing of the Famos rotary heat sealers has been designed out of a hygienic point of view. Surface disinfection and cleaning can be easily done due to the round corners and closed housing.

Another unique feature is that the machines can be easily opened and serviced without the use any tools.

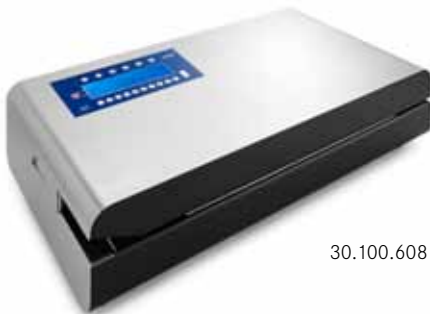
The feed-in guide can be simply and quickly adjusted by an easy clicking system (0-40 mm).

The PROTEC machines* comply to the process validation requirement according to EN ISO 11607-2 and they comply to DIN 58953-7:2010 as well. The integrated parameter control makes it possible to continuously monitor the most important parameters such as temperature, transport speed and pressure. These parameters are being checked with every single seal and in case one of these parameters is incorrect, the machine will give the operator a warning and stops sealing. During the sealing process it is possible to view and monitor the parameters real time on a computer monitor and moreover it is possible to save these on a pc.

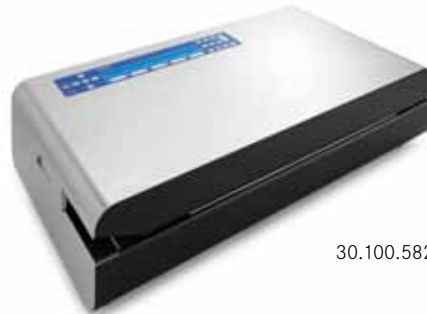
The PROTEC series consists of 8 models which are divided in the product groups PROTEC F108, F110 and F220 based on their specifications

*Does not apply to the PROTEC F108, F108-TX, F110D models

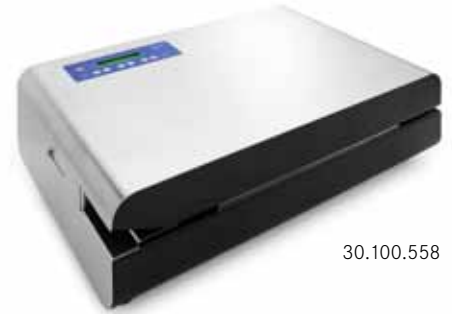
PACKING, PROCESS VALIDATION AND ACCESSORIES



30.100.608



30.100.582



30.100.558

F220 PROTEC

The F220 PROTEC series consists of two models: F220DEP and F220DBC.

As opposed to the F110 PROTEC, the F220 PROTEC series is equipped with a graphical LCD-Display, password protection, changeable printing sequence, programming of 4 expiry dates and programming / saving of up to 3.000 texts.

Both models are equipped with a constant parameter control, RS232 communication port and USB connection. An Ethernet connection is available as an option.

The F220 PROTEC series complies to the requirements of EN ISO 11607-2, the German DGSV-Leitlinie and BfArM recommendation as well as DIN 58953-7.



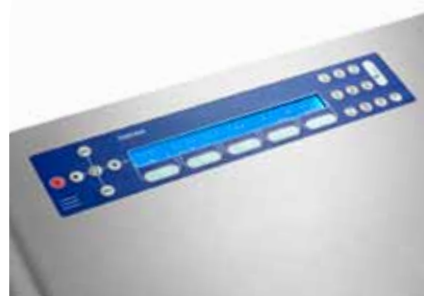
F110 PROTEC

The F110 PROTEC series consists of 3 models: F110D, F110DEP-P/USB and F110DBC-P/USB.

The machines* are equipped with parameter control (temperature, transport speed and pressure) and a USB connection.

All models are equipped with an automatic transport start, a reverse transportation feature and a production counter with alarm. Moreover, the F110 PROTEC models are equipped with an integrated internal printer which, depending on the model, can print the packing date, expiry date, codes, texts and barcodes.

* Except model F110 D



F108 PROTEC

The F108 PROTEC series consists of 3 models: F108, F108TX and F108TX-P/USB.

The F108 heat sealer is the basic model of this series.

The F108 TX and F108 TX-P/USB models are equipped with an automatic transport start, a reverse transportation feature and a production counter with alarm. The F108 PROTEC series is not equipped with an internal printer.

The F108TX-P/USB model is additionally equipped with parameter control and a USB connection.



PACKING, PROCESS VALIDATION AND ACCESSORIES

F 108 PROTEC series / rotary heat sealers

The F108 PROTEC series represents the basic models within the Famos sealer range. The F108 models are not equipped with an internal printer. The F108 PROTEC series consists of 3 models:

F108, F108 TX and F108 TX-P/USB.

The models of the F108 PROTEC series distinguish themselves by a menu controlled operation and micro processor controlled system. A digital temperature setting and control are possible through the LCD display.

The F108 TX and F108 TX-P/USB are additionally equipped with an automatic transport start and reverse transportation feature, which not only ensures safety, but which also prevents both instruments and the sealer itself from getting damaged.

Both models are equipped with another safety feature that stops the machine from sealing when there is a temperature difference of 5°C in regard to the set temperature and the temperature that is actually being measured.

A production counter with audible alarm is also integrated in the F108 TX and F108 TX-P/USB.

Moreover, the F108TX-P is equipped with parameter control and USB connection. Optionally an Ethernet connection can be integrated. In addition all models are equipped with a RS232 communication port for easy software updates.

Each model is available in two versions:

- The first version is equipped with a grooved pressure roller (rib seal) to accommodate a controlled opening of the pouch and is suitable to seal laminate pouches and paper pouches.
- The second version is equipped with a pressure roller without grooves (flat seal) and is especially suitable for Tyvek pouches.

A flat front table and a front table with rollers are available as optional accessories.

PROTEC F 108 SERIES

Art. No.	Product	Description	Packed
30.100.550	F 108 PROTEC 220-240 VAC, 50/60 Hz	F 108 PROTEC heat sealer, rib seal Dimensions: 438 x 289 x 137 mm (LxWxH)	1
30.100.551	F 108 PROTEC - TYVEK 220-240 VAC, 50/60 Hz	F 108 PROTEC heat sealer- TYVEK, flat seal Dimensions: 438 x 289 x 137 mm (LxWxH)	1
30.100.554	F 108 TX PROTEC 220-240 VAC, 50/60 Hz	F 108 TX PROTEC heat sealer, rib seal Dimensions: 438 x 289 x 137 mm (LxWxH)	1
30.100.555	F 108 TX PROTEC - TYVEK 220-240 VAC, 50/60 Hz	F 108 TX PROTEC heat sealer- TYVEK, flat seal Dimensions: 438 x 289 x 137 mm (LxWxH)	1
30.100.558	F 108 TX-P/USB PROTEC 220-240 VAC, 50/60 Hz	F 108 TX-P /USB PROTEC (parameter control), rib seal Dimensions: 438 x 289 x 137 mm (LxWxH)	1
30.100.559	F 108 TX-P/USB PROTEC - TYVEK 220-240 VAC, 50/60 Hz	F 108 TX-P/USB PROTEC - TYVEK heat sealer (parameter control), flat seal, Dimensions: 438 x 289 x 137 mm (LxWxH)	1

FRONT TABLE AND ROLLER FRONT TABLE PROTEC F 108 - SERIES

Art. No.	Product	Description	Packed
30.100.623	F 108 FT	Front table for F108 PROTEC series	1
30.100.620	F 108 RFT	Roller front table for F108 PROTEC series	1

F 110 PROTEC series / rotary heat sealers

According to DIN ISO 11607-2 the sealing process needs to be validated. For this purpose parameter control has been integrated in the F110 series.* This function continuously monitors the parameters temperature, pressure and speed. In case one of the parameters is incorrect, a warning message with sound alarm will be displayed and the machine will stop sealing. The monitoring of the parameters can be done in real time on a pc by means of external parameter monitoring software (included in delivery).

The F110 PROTEC series consists of 3 models: F110D, F110DEP-P/USB and F110DBC-P/USB.

All models are equipped with an automatic transport start, reverse transportation feature and a production counter with alarm. The F110 PROTEC models are equipped with an integrated internal printer which can print various data on the pouches. Each sealer of the F110 PROTEC series can print the packing date, expiry date and a code. Unlike the F110D, the F110DEP-P/USB can print one line of text. The F110DBC-P/USB on the other hand can print two lines of text or one line of text and a barcode.

The F110DEP-P/USB and F110DBC-P/USB have the following additional features:

- Storage of 2.000 texts with 30 characters each.
- Connection for external label printer to print various data on labels.
- Connection to a pc to program texts. Software and cable included in delivery.
- USB connection to connect a USB drive to upload the texts that have been programmed on a pc. In addition, when a USB drive is connected to the sealer, a log will be made of the parameters of each seal.

The F110DBC-P/USB can be connected to various instrument tracking systems which generates different data such as a barcode.

All sealers are available with a grooved pressure roller (rib seal) for laminated or paper pouches or a pressure roller without grooves (flat seal) which is especially suitable to seal Tyvek.

PROTEC F 110 SERIES

Art. No.	Product	Description	Packed
30.100.570	F 110 D PROTEC 220-240 VAC, 50/60 Hz	F 110 D PROTEC heat sealer, rib seal Dimensions: 527 x 314 x 162 mm (LxWxH)	1
30.100.571	F 110 D PROTEC - TYVEK 220-240 VAC, 50/60 Hz	F 110 D PROTEC heat sealer- TYVEK, flat seal Dimensions 527 x 314 x 162 mm (LxWxH)	1
30.100.574	F 110 DEP-P/USB PROTEC 220-240 VAC, 50/60 Hz	F 110 DEP-P/USB PROTEC heat sealer, rib seal Dimensions: 527 x 314 x 162 mm (LxWxH)	1
30.100.575	F 110 DEP-P/USB PROTEC - TYVEK 220-240 VAC, 50/60 Hz	F 110 DEP-P/USB PROTEC heat sealer- TYVEK, flat seal Dimensions 527 x 314 x 162 mm (LxWxH)	1
30.100.582	F 110 DBC-P/USB PROTEC 220-240 VAC, 50/60 Hz	F 110 DBC-P/USB PROTEC heat sealer, rib seal Dimensions: 527 x 314 x 162 mm (LxWxH)	1
30.100.583	F 110 DBC-P/USB PROTEC - TYVEK 220-240 VAC, 50/60 Hz	F 110 DBC-P/USB PROTEC heat sealer- TYVEK, flat seal Dimensions 527 x 314 x 162 mm (LxWxH)	1

FRONT TABLE AND ROLLER FRONT TABLE PROTEC F 110 / F220 - SERIES

Art. No.	Product	Description	Packed
30.100.626	F 110 / F 220 FT	Front table for F 110 / F 220 PROTEC series	1
30.100.619	F 110 / F 220 RFT	Roller front table for F 110 / F 220 PROTEC series	1

*Not included in the F110D

PACKING, PROCESS VALIDATION AND ACCESSORIES

F220 PROTEC series / rotary heat sealers

The F220 PROTEC series represent the most extensive sealers of the Famos sealer range. This series consists of two models: The F220DEP-P/USB and F220DBC-P/USB PROTEC. Both models are equipped with parameter control which makes the sealers DIN ISO 11607-2 compliant. As a result the parameters temperature, speed and pressure are constantly being checked with each seal. If one of these parameters is incorrect, the machine will stop sealing and will notify the user by a warning message and a sound alarm. Together with the machines a software program is being supplied which is to be installed on a pc. Through this software program one can monitor the parameters real time on a computer and store the files for archiving.

All models of the F220 PROTEC series have an automatic transport start, reverse transport feature and production counter with alarm.

An internal printer is integrated in this series as well. The F220DEP-P/USB can print the packing date, expiry date, a code and one line of text which can consist of up to 30 characters. The F220DBC-P/USB PROTEC can also print this data, but in addition it can print an additional line of text or a barcode.

The F220DBC-P/USB can be connected to an instrument tracking system which generates various data such as a barcode. Please consult Famos for further information.

Both F220 PROTEC models have the following extra features:

- Storage of 3.000 texts with 30 characters each.
- Connection for external label printer to print various data on labels.
- Connection to a pc to program texts. Software and cable included in delivery.
- USB connection to connect a USB drive to upload the texts that have been programmed on a pc. In addition, when a USB drive is connected to the sealer, a log will be made of the parameters of each seal.

An Ethernet connection is available as an option for both models.

The F220 PROTEC series is the only series of the Famos range that is equipped with a large graphical LCD-display. The F220 PROTEC models are also the only Famos sealers that have password protection, changeable printing sequence, programming of 4 expiry dates and programming / saving of up to 3.000 texts.

All sealers are available with a grooved pressure roller (rib seal) for laminated or paper pouches or a pressure roller without grooves (flat seal) which is especially suitable to seal Tyvek packaging material.

PROTEC F 220 SERIES

Art. no.	Product	Description	Packed
30.100.600	F 220 DEP-P/USB PROTEC 220-240 VAC, 50/60 Hz	F 220 DEP-P/USB PROTEC heat sealer, rib seal Dimensions 527 x 314 x 162 mm (LxWxH)	1
30.100.601	F 220 DEP-P/USB PROTEC - TYVEK 220-240 VAC, 50/60 Hz	F 220 DEP-P/USB PROTEC heat sealer- TYVEK, flat seal Dimensions 527 x 314 x 162 mm (LxWxH)	1
30.100.608	F 220 DBC-P/USB PROTEC 220-240 VAC, 50/60 Hz	F 220 DBC-P/USB PROTEC heat sealer, rib seal Dimensions 527 x 314 x 162 mm (LxWxH)	1
30.100.609	F 220 DBC-P/USB PROTEC - TYVEK 220-240 VAC, 50/60	F 220 DBC-P/USB PROTEC heat sealer- TYVEK, flat seal Dimensions 527 x 314 x 162 mm (LxWxH)	1

FRONT TABLE AND ROLLER FRONT TABLE PROTEC F 110 / F220 - SERIES

Art. no.	Product	Description	Packed
30.100.626	F 110 / F 220 FT	Front table for F 110 / F 220 PROTEC series	1
30.100.619	F 110 / F 220 RFT	Roller front table for F 110 / F 220 PROTEC series	1

F 70 series / impulse sealers



31.100.008

- Integrated cutting device
- Suitable to seal almost every kind of packaging
- Electronically controlled

The F70 impulse heat sealers are suitable to use whenever small quantities of seals are being made or to seal material that cannot be sealed by rotary heat sealers. The F70 series is suitable for sealing pouches of polypropylene, polyethylene, Tyvek, paper pouches with glue strip and many other materials which have to be sealed.

In addition dust covers can be sealed with the F70 series as well. The F70 machines are reliable machines which are easy to operate. They are completely made of AISI 304 stainless steel.

Furthermore, this series is also ideal for processing packaging material from the roll. For this purpose, the F70 has a built-in roll holder to pack items and a cutting device in order to separate the sealed packaging from the roll.

The sealer works through a lever which has to be pulled down after which the sealer heats up automatically. When the set sealing time has passed an extra cooling down period of 2 seconds will follow automatically.

The sealing time and cooling down time are being indicated by a LED.

The F70 series is available in two models:

The F70-300 and the F70-400.

The F70-300 has an effective seal length of 320mm.

The F70-400 has an effective seal length of 420mm.

Both models are time-controlled and produce a seal width of 8mm.

F70 IMPULSE SEALERS

Art. No.	Product	Description	Packed
31.100.008	F 70-300 impulse sealer 220-240 VAC, 50/60 Hz	F 70-300 impulse sealer, seal length: 320mm Dimensions: 435 x340x190 mm (LxWxH)	1
31.100.016	F 70-400 impulse sealer 220-240 VAC, 50/60 Hz	F 70-400 impulse sealer, seal length: 420mm Dimensions: 435x440x190mm (LxWxH)	1

PACKING, PROCESS VALIDATION AND ACCESSORIES

STAINLESS STEEL HOLDERS TO STORE PACKAGING MATERIAL ON ROLLS

- Self-sharpening knife
- 2 steel rods with nylon bearings
- Various capacities with or without extension



ROLL HOLDER WITH CUTTING DEVICE

Famos has designed various roll holders including cutting device to create the length of packaging material that is required. The rotary knife of the cutting device is made from the highest quality hardened steel and is self-sharpening which ensures years of maintenance free use.

Famos offers the following types: TS600, TS750 and TS900.

The type number represents both the effective working capacity and the storage capacity of the roll holder. The roll holders are equipped with nylon bearings which makes it a lot easier to unroll the reels. Furthermore, an extension can be added which doubles the storage capacity of the holder.

All roll holders are available in two versions:

- Table model which can also be attached to the wall (only applicable for roll holders without extension).
- Model which can be hung onto an upright partition of a packing table or workstation.

In case a roll holder with extension should be mounted against the wall, Famos can supply profiles for this.

In case a roll holder with / without extension should be hung to an upright partition of a packing table or workstation, this should be mentioned upon ordering.

In addition to the TS600, TS750 and TS900 roll holders Famos also offers two different roll holders in case extra long packaging material needs to be stored or cut.

These two models are the TS1200 and TS1500. The roll holders are made of AISI 304 stainless steel.

Both models have an integrated cutting mechanism with a self-sharpening knife.

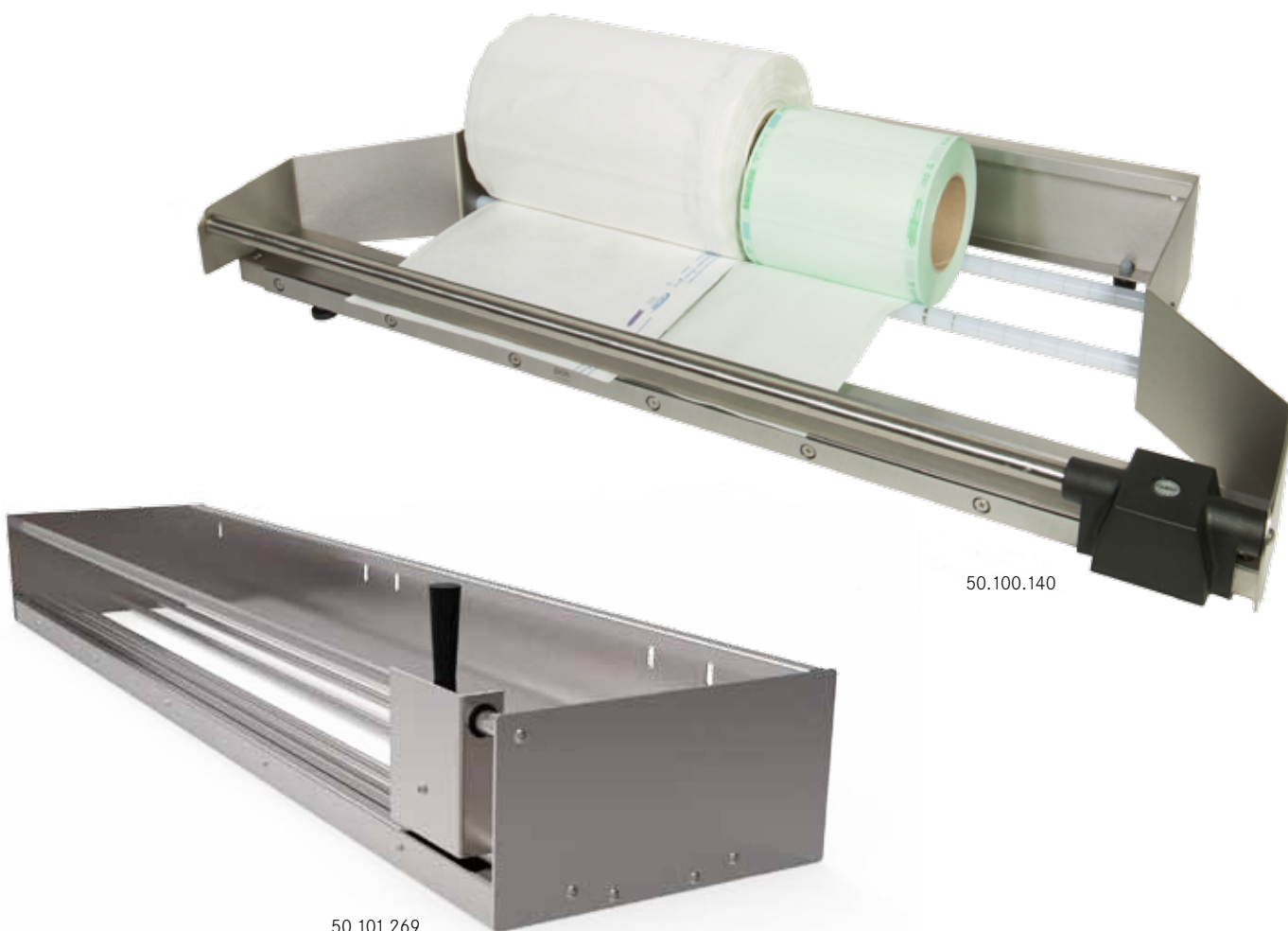
The TS1200 and TS1500 roll holders are standard supplied as table models. On request they can also be supplied as models which can be hung onto an upright partition of a packing table or workstation, provided that the partition is equipped with hooks with a centre distance of 530mm.

Upon request the TS1200 and TS1500 can also be made suitable for wall mounting by the use of screws.

PACKING, PROCESS VALIDATION AND ACCESSORIES

ROLL HOLDER WITH CUTTING DEVICE

Art. No.	Product	Description	Packed
50.100.140	TS600	Roll holder with cutting device Storage capacity: 600 mm, dimensions: 820 x 420 x 130 mm	1
50.100.138	OZ600	Extension for roll holder Storage capacity: 600 mm, dimensions: 820 x 420 x 290 mm	1
50.100.080	TS750	Roll holder with cutting device Storage capacity: 750 mm, dimensions: 970 x 420 x 130 mm	1
50.100.081	OZ750	Extension for roll holder Storage capacity: 750 mm, dimensions: 970 x 420 x 290 mm	1
50.100.130	TS900	Roll holder with cutting device Storage capacity: 900 mm, dimensions 1120 x 420 x 130 mm	1
50.100.131	OZ900	Extension for roll holder Storage capacity: 900 mm, dimensions: 1120 x 420 x 130 mm	1
50.200.847	Profile	Stainless steel profile for wall mounting (4 pieces per TS/OZ needed)	1
50.101.118	TS1200	Roll holder with cutting device Storage capacity: 1200 mm, dimensions: 1200 x 330 x 170 mm	1
50.101.269	TS1500	Roll holder with cutting device Storage capacity: 1500 mm, dimensions: 1500 x 330 x 170 mm	1



PACKING, PROCESS VALIDATION AND ACCESSORIES

SEAL TEST

- For daily testing of sealing seam according to ISO 11607-2



15.300.069



15.300.043

- Suitable for laminate packaging material
- Contains fields to document various information such as sealer number, location, date, approval and signature
- Easy documentation with matching folder (optional)

ISO11607-2 (Validation requirements for forming, sealing and assembly processes), requires Operational Qualification (OQ) of packaging devices to be carried out and documented.

The OQ is requiring providing proof of:

- Intact seal for a specific seal width
- No channels or open seals
- No punctures or tears in seals
- No material delaminating or separation

The OQ needs to be carried out on a daily basis to release the packaging device before use. For this purpose Famos offers two different seal tests:

The seal test and the push indicator dye test.

The seal test can only be used for laminate packaging material.

The seal test is a paper test.

The parts which are sealed together are showing a darker area than the surrounding area in order to make sure that irregularities in the seal are easy to see and the complete seal can be interpreted more easily.

If there is a constant darker area at the sealed location, then it can be concluded that the seal is correct.

The seal test offers the following fields for documentation: Sealer number, location, date, approval and signature.

When the sealer has been released for use, the seal test is being documented. For this purpose Famos offers a laminated folder.

This folder is available separately or as a complete set together with one carton of seal tests.

SEAL TEST

Art. No.	Product	Description	Packed
15.300.043	Famos Seal test	Seal tests for testing the sealing seam of rotary heat sealers 250 test sheets	250
15.300.068	Famos folder	1 laminated folder, white for storage of seal test	1
15.300.069	Famos folder + seal test	1 laminated folder, white for storage of seal test + 1 box of 250 seal tests	1

PUSH INDICATOR DYE TEST

- For daily testing of sealing seam according to ISO 111607-1



24.900.860

- Suitable for both laminate and Tyvek packaging material
- Ink test
- No pipettes or other objects required
- Packed in an aluminum package which protects the ink from light influences

The push indicator dye test can be used for both laminate and Tyvek packaging material.

The push indicator dye test uses ink to test the quality of the seal. In contrary to many other ink tests that are available in the market, the Famos push indicator dye test does not use any pipettes or other objects, so it will not damage the seal.

The indicator test is being placed in a pouch before it is being sealed. After it has been sealed, you need to press on the test in the direction of the arrow. After this you need to hold the test in a straight position with the seal

downwards. By doing this, the ink will get in contact with the seal and this will make any weak spots immediately visible.

The push indicator dye test is being packed in a special packaging for easy applications. The ink test is packed in an aluminum package which protects the ink against light influences.

Another great advantage of this test is that you can prepare and seal your test pouch in advance without the risk of leakage or migration of blue Methylene on valuable objects in your work area.

PUSH INDICATOR DYE TEST

Art. No.	Product	Description	Packed
24.900.860	Push Indicator Dye Test	Ink test for testing sealing seam of rotary heat sealers 30 tests	30



CUSTOMIZED

PRE-CLEANING



PRE-CLEANING

PRE-CLEANING STATIONS

- 3D Engineering and Developing
- Customized and individual product solutions
- Latest quality standards
- Qualified After Sales Service



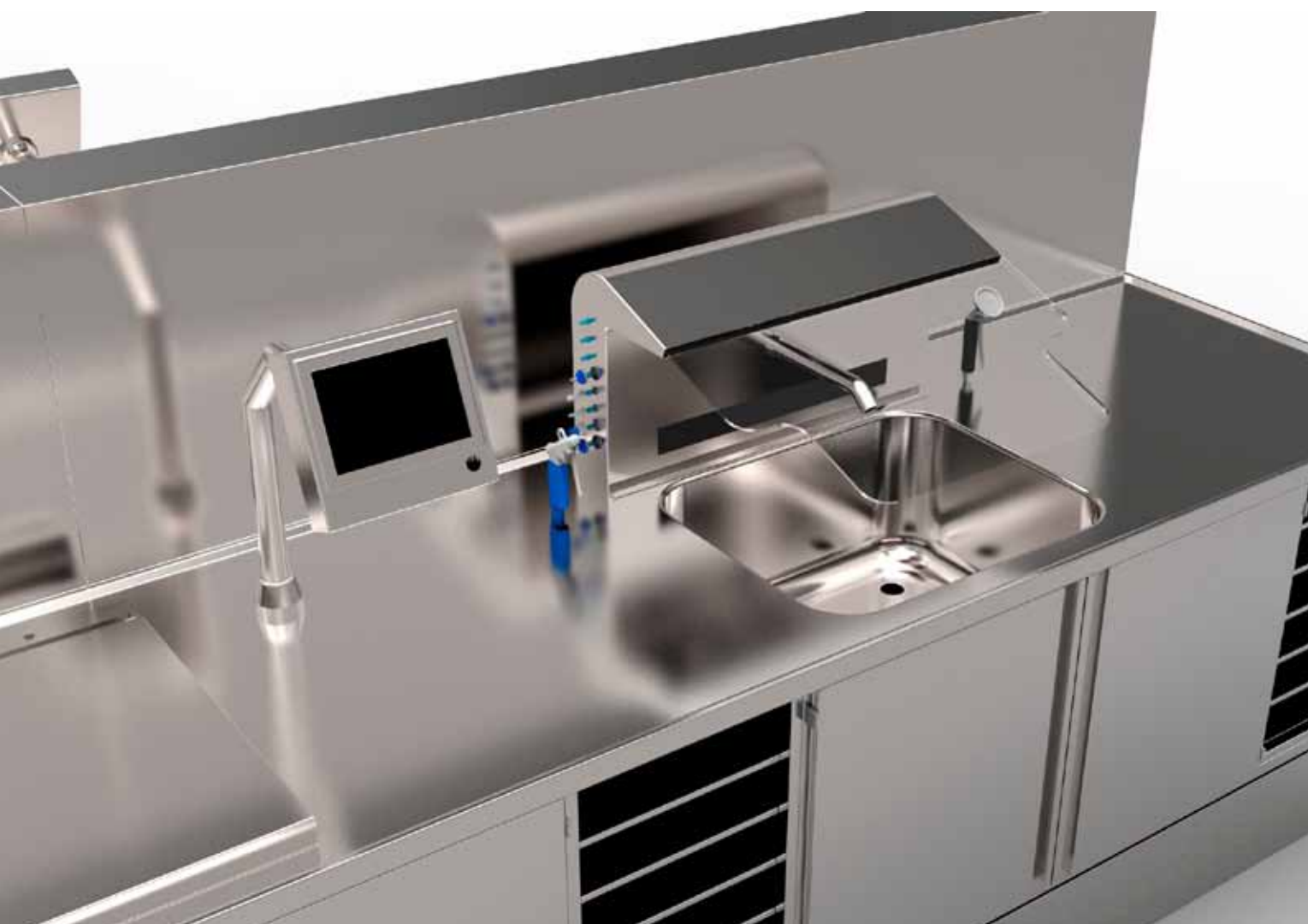
50.104.500

The pre-cleaning process is one of the most important steps in the reprocessing cycle of medical instruments. Only when the pre-cleaning is being done properly then the following procedures like washing and sterilization can be done effectively and correctly.

The Famos pre-cleaning stations are completely made of AISI 304 stainless steel. The configuration of the pre-cleaning units is always customized by Famos depending on local requirements and standards.

A large variety of units can be manufactured. This varies from very basic clean-up counters without ultrasonic cleaner to fully automatic pre-cleaning stations with ultrasonic cleaner, spraying tank, tray lifts and automatic filling and draining.

Additionally, ergonomic considerations play an ever-increasing role in the working environment. Famos responds to these requirements by not only offering fixed height units, but height adjustable pre-cleaning units as well.



PRE-CLEANING

CUSTOMIZED PRE-CLEANING STATIONS



Customized pre-cleaning units with fully automatic ultrasonic cleaner with tray lift. The unit is completely made of AISI 304 stainless steel. The worktop is equipped with a water rim and a backsplash at the back to prevent any spilled fluids from dripping onto the floor.

The unit is equipped with a built-in IND 5535 ultrasonic cleaner with a 48 liter capacity. Built-in ultrasonic cleaners with larger capacities are available as well.

The ultrasonic cleaning bath is being filled and drained automatically. Furthermore, it is equipped with a mixing system which mixes the water automatically before the ultrasonic cleaning bath is being filled. This feature shortens the pre-heating time of the bath drastically. A detergent pump to add detergent into the ultrasonic cleaner is included as well.

The ultrasonic cleaner can be operated through a touch-screen or by means of push buttons.

The tray lift system is equipped with a removable tray rack on which two trays can be placed at the same time during the cleaning process. When opened the lid of the tray rack will be positioned in an angle of $\pm 30^\circ$ which provides a good view on the instrument tray.

In addition the unit can be equipped with a spraying tank with tray lift or a sink bowl without tray lift.

The sink can be equipped with a personal protection shield and mixing tap. The sink can either be filled manually or automatically. Upon request the personal protection shield can be equipped with time controlled lighting and aerosol extraction system. Other accessories such as spray guns, overhead showers or hand sprays are available as well.

The understructure of the unit can entirely consist of closed cabinets. Alternatively the understructure can partly consist of open cabinets with shelves or slides to accommodate instrument trays or drawer blocks.

The height of the unit can either be fixed or electrically height adjustable.



PRE-CLEANING

CLEAN-UP COUNTER FOR CLEANING ENDOSCOPES

- Made of AISI 304 stainless steel
- Electrically height adjustable or fixed height
- Completely manufactured upon client-specific requirements



This clean-up counter has been especially designed to clean endoscopes. The unit is completely made of AISI 304 stainless steel. The unit has a fixed height. Upon request it is also possible to make the pre-cleaning unit height adjustable. The dimensions are 3700x700x900mm but can be adapted to requirements of the customer.

The worktop is equipped with a water rim at the front and sides and a 400mm backsplash at the back to prevent any spilled fluids from dripping of the unit. The clean-up counter is equipped with two stainless steel sinks one small sink and a large one.

PRE-CLEANING

The small sink is 400x400x250mm. At this sink one mixing tap is located. Furthermore, a large scope sink of 2100x400x200mm is included. At the scope sink an 6636FS overhead shower with integrated mixing tap and two spray guns are mounted in the worktop.

The spray guns are supplied together with matching spray gun holder and cone, 8 attachments a-h 1/2" and a metal hose of 2 meters. The spray guns are suitable for water or pressurized air.

The understructure of the clean-up counter consists of four closed cabinets with double doors. The bottom shelves of the cabinets are removable which ensures easy access to all in- and outputs.

The endoscope clean-up counter can be completely manufactured according to client-specific requirements.



PRE-CLEANING

FULLY AUTOMATIC PRE-CLEANING STATIONS

- Touch-screen operation
- Material: AISI 304 stainless steel
- With ultrasonic cleaner and spraying tank



Fully automatic pre-cleaning station completely made of AISI 304 stainless steel with touch-screen control. The unit has a fixed height. Upon request it is also possible to make the pre-cleaning unit height adjustable.

The complete unit will be equipped with a water rim around the sides to prevent any spilled fluids from dripping of the unit. The back of the unit is equipped with a 100mm backsplash.

The pre-cleaning unit is standard equipped with a built-in IND5535 ultrasonic cleaning bath, which has a working capacity of 48 liters. Larger ultrasonic cleaning baths are available on request. In addition, the unit is equipped with a spraying tank.

Both tanks are fully integrated in the worktop and are both equipped with fully automatic tray lifts. The ultrasonic cleaning bath as well as the spraying tank and tray lift systems are being operated through one and the same touch-screen. The use of the touch-screen offers many advantages in comparison to a regular time-relays controlled unit due to the fact that the process times can be easily changed by everyone without having to consult a technician who has to adjust the time relays within an external section. The adjustments of important parameters with the help of technicians now belongs to the past and all staff members can operate and adjust the parameters to the requirements of the instruments which have to be processed. The ultrasonic cleaning bath is being filled and drained automatically.

The unit is equipped with a mixing system which will be placed inside the cupboard underneath the ultrasonic cleaner. This mixing system automatically mixes the water before the ultrasonic cleaning bath is being filled. This feature shortens the pre-heating time drastically. The unit is also equipped with a detergent pump to add detergent to the ultrasonic cleaner.

The spraying tank is equipped with eight spraying nozzles to effectively rinse instrument trays with cold or mixed water. Each tray lift is equipped with a removable tray rack on which two instrument trays can be placed at the same time during the cleaning process. When opened the lid of the tray rack will be positioned in an angle of circa 30° which provides a good view of the instrument tray.

Apart from the ultrasonic cleaning bath and spraying tank the unit can also be expanded and equipped with one or more sinks.

These sinks can either be filled manually or automatically. Accessories such as overhead showers, personal protection-shield, spray guns or hand sprays can be added as well.

The understructure of the clean-up counter consists of closed cabinets with double doors. In addition, it can consist of open cabinets or drawer blocks.

The closed cabinets house the electrical switchbox, ultrasonic generator and detergent pump.

The bottom shelves of the cabinets are removable which ensures easy access to all in- and outputs.

The unit is placed on a 150mm high plinth.

The Famos pre-cleaning unit is completely being manufactured upon client specific requirements.



PRE-CLEANING

CLEAN-UP COUNTER

- Completely made of AISI 304 stainless steel
- With open or closed understructure
- Completely customized



Clean-up counter for the first rinsing and cleaning of soiled instruments. The unit is completely made of AISI 304 stainless steel. The dimensions are adapted to requirements of the customer. The unit has a fixed height. Upon request it is also possible to make the pre-cleaning unit height adjustable.

The worktop is equipped with a water rim around the sides to prevent any spilled fluids from dripping of the unit. Furthermore, the clean-up counter is equipped with a backsplash at the back of the unit.

The clean-up counter can be equipped with one or more sinks. Apart from standard sinks the unit can also be equipped with customized sinks.

The sinks can be filled by means of a mixing tap. In addition, there are various accessories available, like overhead showers, personal protection shields, hand spray and spray guns.

The understructure of the clean-up counter can be equipped with an open frame which is made of stainless steel square tubes.

The open frame can be equipped with a shelf underneath for storage purposes. It is also equipped with four pieces of leveling feet which are adjustable up to 20mm. Alternatively, the understructure of the clean-up counter can consist of closed cabinets or drawer blocks.

The clean-up counter is completely manufactured according to client specific requirements.



PRE-CLEANING

BUILT-IN ULTRASONIC CLEANERS

The manual pre-cleaning station is made of stainless steel AISI 304 and includes a built-in ultrasonic cleaner. The ultrasonic cleaning tank is mounted from below in order to prevent unnecessary space for contamination. An inclined bottom makes complete emptying possible and rounded tank corners allow an easy cleaning of the tank for the CSSD staff. The ultrasonic pre cleaning station has a fixed height. The worktop is equipped with a water rim at the front and around the sides to prevent any spilled fluids from dripping of the unit. Furthermore, the pre-cleaning station is equipped with a backsplash of 108mm at the back of the unit.

The pre-cleaning station is available with 2 different built-in ultrasonic cleaners:

FamoSonic BS with a capacity of 29 liters and FamoSonic BM with a capacity of 46 liters. Both tank sizes are suitable for 1/1 DIN trays (480x250mm LxW).

The FamoSonic BM can also be used in combination with ISO trays.

It has a safety shutdown function after 12 hours. The ultrasonic cleaning bath is being filled and drained manually. Underneath the unit a cabinet with double doors has been mounted. The unit is placed on a 100mm plinth for easy installation.

For a correct operation a basket holder, basket and lid are required as well.



FAMOSONIC BM

MANUAL PRE-CLEANING STATIONS

Art. No.	Product	Description	Packed
50.105.509	Pre-cleaning station with BS ultrasonic cleaner	Manual pre-cleaning station with BS ultrasonic cleaner, max. capacity 29 liters. Dimensions 900x730x890 mm WxDxH	1
50.105.357	Pre-cleaning station with BM ultrasonic cleaner	Manual pre-cleaning station with BM ultrasonic cleaner, max. capacity 46 liters. Dimensions 900x730x890 mm WxDxH	1
24.901.306	Basket holder M / BS	Basket holder for FamoSonic M / BS	1
24.901.307	Basket holder XL / BM	Basket holder for FamoSonic XL / BM	1
24.901.322	Lid KT-BS	Lid for FamoSonic BS, only for use with basket holder	1
24.901.323	Lid KT-BM	Lid for FamoSonic BM, only for use with basket holder	1
50.100.062	1/1 DIN tray	1/1 DIN instrument tray, 480x250x60 mm LxWxH	1



FAMOSONIC S



FAMOSONIC M



FAMOSONIC XL

Famos has various high power ultrasonic cleaning units for aqueous cleaning solutions in its product range. The benchtop models are available in three different sizes, S, M and XL. The tank of the S and M models are made of AISI 304 stainless steel, while the tank of the XL is made of AISI 316 stainless steel. All baths are equipped with a digital display including degas function.

The FamoSonic S is suitable for 1/2 DIN instrument trays such as the 50.100.063.

The FamoSonic M is suitable for 1/1 DIN instrument trays such as the 50.100.062.

The FamoSonic XL is suitable for 1/1 DIN and 1/1 ISO instrument trays such as the 50.100.062.

The ultrasonic cleaning baths need to be used in combination with an insert basket and lid.

These are available as accessories.

BENCHTOP ULTRASONIC CLEANERS

Art.-No.	Product	Description	Packed
24.901.301	FamoSonic S	FamoSonic S benchtop ultrasonic cleaner, 13,5 liters max. capacity Internal dimensions: 325x300x150 mm LxWxH	1
24.901.302	FamoSonic M	FamoSonic M benchtop ultrasonic cleaner, 28 liters max. capacity Internal dimensions: 500x300x200 mm LxWxH	1
24.901.303	FamoSonic XL	FamoSonic XL benchtop ultrasonic cleaner, 90 liters max. capacity Internal dimensions: 600x500x300 mm LxWxH	1



PRE-CLEANING

ACCESSORIES FOR FAMOSONIC BENCHTOP ULTRASONIC CLEANERS

- Different lids available for basket holders and insert baskets
- Basket holders for 1/2 DIN, 1/1 DIN and ISO trays
- Insert baskets



In order to make sure that the ultrasonic cleaning bath works properly, it is necessary to use it in combination with a basket and lid.

For the FamoSonic S, M and XL there is an insert basket available. Alternatively, it is possible to use 1/1 DIN or ISO and 1/2 DIN trays. A tray must never be placed directly onto the bottom of the ultrasonic cleaner, because this might damage the unit. Therefore, Famos offers basket holders which the instrument trays can be placed on.



ACCESSORIES FOR BENCHTOP ULTRASONIC CLEANERS

Art. No.	Product	Description	Packed
24.901.305	Basket holder S	Basket holder for FamoSonic S	1
24.901.306	Basket holder M / BS	Basket holder for FamoSonic M / BS	1
50.100.062	1/1 DIN tray	1/1 DIN instrument tray, 480x250x60 mm LxWxH	1
50.100.063	1/2 DIN tray	1/2 DIN instrument tray, 240x250x60 mm LxWxH	1
24.901.315	Insert basket S	Insert basket for FamoSonic S, 275x245x50 mm LxWxH	1
24.901.320	Insert basket M	Insert basket for FamoSonic M, 455x245x50 mm LxWxH	1
24.901.314	Insert basket XL	Insert basket for FamoSonic XL, 545x450x50 mm LxWxH	1
24.901.316	Lid EHK-S	Lid for FamoSonic S, only for use with insert basket	1
24.901.321	Lid EHK-M	Lid for FamoSonic M, only for use with insert basket	1
24.901.310	Lid EHK-XL	Lid for FamoSonic XL, only for use with insert basket	1
24.901.308	Lid KT-S	Lid for FamoSonic S, only for use with basket holder	1
24.901.309	Lid KT-M	Lid for FamoSonic M, only for use with basket holder	1



FAMOSONIC M
WITH BASKET HOLDER

PRE-CLEANING

ULTRASONIC CLEANER FOR MIS INSTRUMENTS

- Reprocessing of maximum of 12 cannulated minimal invasive surgical instruments
- Separate rinsing and flow rate examination of each lumen instrument
- Rinsing according to suction principle
- Cost-effective



FAMOSONIC FLUSH

In addition to the benchtop models Famos also offers the FamoSonic Flush. The tank is made of AISI 316 stainless steel, while the housing is made of AISI 304 stainless steel.

The FamoSonic Flush can be used for the reprocessing of cannulated MIS (Minimal Invasive Surgical) instruments. It can reprocess a total of 12 cannulated minimal invasive surgical instruments with external diameters from 1mm up to 10mm.

It offers separate rinsing and flow rate examination of each lumen instrument. Each clogged instrument can be clearly identified by the software.

The instruments are rinsed with a suction principle. This means the distal end of the MIS instruments is connected to the adapter and rinsed due to a vacuum principal. Up to 12 instruments can be connected to the universal adapter. Change of the seal is not necessary.

This method of cleaning is cost-effective because faulty instruments can be sorted out in the first reprocessing cycle in the pre cleaning phase.

The FamoSonic flush is the only ultrasonic device with a suction principle on the market world wide. All other brands are working with pressure and pass all the dirt through the instrument.

The advantage of the suction principle is the short way to the adapter. The most part of the contamination you will find on the distal end of the instrument. Dirt will not be forwarded through the whole lumen and will not accumulate in the restrictions in the range of the handle.

Supplied together with the following:

- Stainless steel basket with handles for drip-drying above the oscillation tank
- 12 adapters with sealing and hoses
- 1 pack of 30 filtration cartridges
- 1 pack of 12 adapter sealings
- 1 pack of 2 test strips

Other accessories and consumables are available as an option.



FAMOSONIC FLUSH & ACCESSORIES

Art.-No.	Product	Description	Packed
24.901.304	FamoSonic Flush	FamoSonic Flush, ultrasonic cleaner for MIS instruments	1
24.901.317	Basket Flush	Stainless steel basket, sieve tray , 520x340x50 mm LxWxH	1
24.900.899	SS lid Flush	Stainless steel hinged lid with gas Spring and EPDM gasket	1
24.901.311	Plastic lid Flush	Plastic lid	1
24.901.318	Knob mat Flush	Silicone knob mat ,245x172mm LxW	1
24.901.400	Filter cartridges EF 1001 / 30	Set of EF 100 filter cartridges, 30 pieces / set	30
24.901.401	Filter cartridges EF 1001 / 100	Set of EF 100 filter cartridges, 100 pieces / set	100
24.901.402	Adapter seals AD 1000 / 12	Set of a AD 1000 dapter seals, 12 pieces / set	12
24.901.403	Adapter seals AD 1000 / 24	Set of a AD 1000 dapter seals, 24 pieces / set	24
24.901.404	Adapter seals AD 1000 / 36	Set of a AD 1000 dapter seals, 36 pieces / set	36
24.901.405	Adapter with seals and hose ADS 1000 / 1	Set of a AD 1000 dapter seals and hose, 1 piece / set	1
24.901.406	Adapter with seals and hose ADS 1000 / 12	Set of a AD 1000 dapter seals and hose, 12 pieces / set	12

PRE-CLEANING



SPRAY GUN FOR WATER AND AIR

The spray gun supplied by Famos bv is the ideal instrument for cleaning laboratory glassware, pipettes, syringes, catheters, cuvettes, endoscopes, cystoscopes, cannulae and a variety of other instruments and articles used in clinics, laboratories, and medical practices-in other words, everywhere highest cleanliness and hygiene are mandatory.

The spray gun features a new type of internal flow control mechanism. It permits the smooth and simple adjustment of the water or air flow across the entire range of the trigger movement.

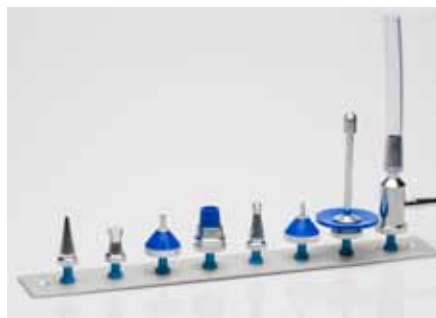
The desired maximum water or air flow can be set by using the small knurled screw located behind the trigger.

Attachments are connected by seating them on the safety cone located at the tip. Even high pressure cannot disconnect them.

- The spray gun is incredibly easy to use
- The spray gun uses either water or pressurised air, which means the cleaning process is quick, efficient and inexpensive
- Heat insulated grip



24.900.350



Set of attachments A-H



24.900.148



A



B



C



D



F



G



H

SPRAY GUN FOR WATER AND AIR

Art.-No.	Product	Description	Packed
24.900.350	1001	Spray gun 1/2" Without hose or attachments	1
24.900.148	1000	Spray gun 1/2" Incl. 1 m plastic hose, without attachments	1
24.900.010	2000	Spray gun 3/4" Incl. 1 m plastic hose, without attachments	1
24.900.289	1080	Standard set 1/2" Incl. 1,5m plastic hose and att. A,B,C,D,E,F,G,H	1
24.900.337	2081	Standard set 3/4" Incl. 1,5m plastic hose and att. A,B,C,D,E,F,G,H	1

ATTACHMENTS

Art.-No.	Product	Description	Packed
24.900.158	1040	A For syringes and cannula with record cone	1
24.900.150	1041	B For measuring and blood pipettes	1
24.900.545	0105	C For catheters, valves, etc.	1
24.900.564	0106	D For drainage tubes	1
24.900.565	1042	E For syringes and cannulae with luer cone	1
24.900.566	0108	F Spray jet for rinsing out glassware etc.	1
24.900.567	1043	G For bottles and erlenmeyer flasks	1
24.900.568	1044	H Water jet pump for suction cleaning	1

PRE-CLEANING



STAINLESS STEEL SPRAY GUN FOR DEMI WATER OR AIR

Unlike any of our other spray guns, this is a cleaning gun made completely of stainless steel. One of the greatest advantages of the stainless steel spray gun is that it can be used with demineralized water. The stainless steel spray gun is able to be sterilized, thus the pistols can be used in the operating room or in the clean room.

Use this product to effectively clean instruments in a quick and easy way. The stainless steel spray gun comes equipped with two nozzles, an inject attachment piece, a trigger locking ring, a wall-mount, a hose with stainless steel snap-closing connector, and a coupling protection cover.

- The spray gun is made completely of stainless steel.
- Resistant to cold demineralized water.





24.901.087



24.901.086



24.901.085

STAINLESS STEEL SPRAY GUN SETS FOR DEMI WATER

Art.-No.	Product	Description	Packed
24.901.080	20530100 Standard set 1/2"*	Incl. 1m plastic hose, peak- and shower-nozzle, LL-nozzle, wall mount	1
24.901.081	20530150 Standard set 1/2"*	Incl. 1,5m plastic hose, peak- and shower-nozzle, LL-nozzle, wall mount	1

STAINLESS STEEL SPRAY GUN SETS FOR AIR

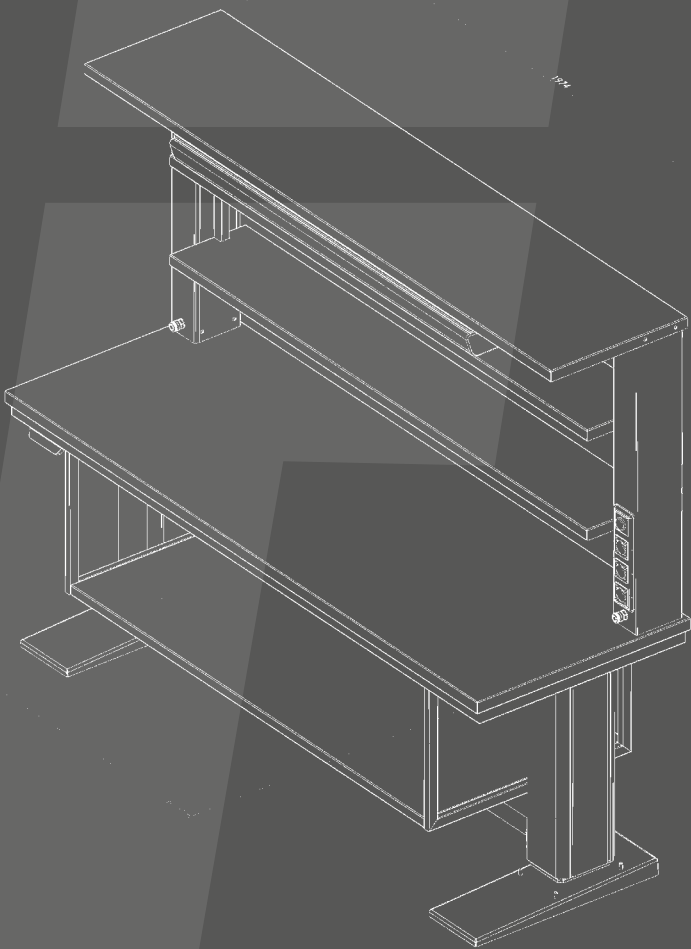
Art.-No.	Product	Description	Packed
24.901.082	20516100 Standard set 1/2"*	Incl. 1m plastic hose, peak- and shower-nozzle, LL-nozzle, wall	1
24.901.083	20516150 Standard set 1/2"*	Incl. 1,5m plastic hose, peak- and shower-nozzle, LL-nozzle, wall mount	1

OPTIONAL

Art.-No.	Product	Description	Packed
24.901.084	20565000	Table mount, worktop thickness max. 45mm**	1
24.901.085	20500540	Nozzle for cannulae with luer cone	1
24.901.086	20500060	Nozzle for tubes	1
24.901.087	20507700	Table stand for 7 nozzles	1

*Connection 3/4" and 3/8" on request

** Other worktop thickness on request



CUSTOMIZED

PACKING



PACKING

LINEN INSPECTION TABLE



50.101.974

- Worktop standard available in HPL or Volkern
- With illuminated part
- Frame and shelf made of AISI 304 stainless steel



The linen inspection table is a work table with an all-clear illumination part which is built into the top for easy inspection of linen drapes and packing wraps.

The illuminated part has four tubular lights and milky coloured glass. The lighting capacity is 4 x 18 Watt. The worktop is made of either HPL (High Pressure Laminate) or Volkern. The color of the worktop can be chosen from a range of standard colors.

The illuminated part is 1000x800mm.
 The tubular lights are connected to a 220V-50Hz power supply.
 The table is equipped with an on/off switch on one side of the table.

The frame of the linen inspection table is made of stainless steel tube 304 40x40x1,5mm and is equipped with four pieces of leveling feet.

Furthermore, the table is equipped with a stainless steel shelf underneath for storage purposes.

LINEN INSPECTION TABLES

Art. No.	Description	Packed
50.101.974	Inspection table with HPL top in off-white Dimensions 2000 x1200 x 900 mm WxDxH	1
50.101.975	Inspection table with Volkern top in white Dimensions 2000 x1200 x 900 mm WxDxH	1

HEIGHT ADJUSTABLE PACKING TABLES

- Electrically height adjustable
- Various worktops available
- Robust aluminium columns and stainless steel feet



Study of staff in their working environment made Famos develop, implement and improve comfort and efficiency in the packing area. Ergonomic considerations play an ever-increasing role in the working environment. Not only work satisfaction can be increased, but also the risk of health complaints can be drastically reduced. A very important consideration in ensuring a good work posture is the height of the worktop.

In certain circumstances a fixed alteration of the table height will not automatically lead to a lasting solution for this problem. Take the case where different people of various heights and postures are required to use the same packing table or when certain tasks are alternately performed in a standing and sitting position.

In such cases seven push buttons offer the solution!

Famos has designed a height adjustable packing table that is operated by push buttons to adjust the tabletop to a higher or lower position thus providing an adjustable and variable worktop height from 770 to 1200 mm. The height adjustable packing table with electronic control allows a pre-set of four different heights. Not only this feature but also the wide range in worktop materials and dimensions, make the Famos height adjustable packing tables multifunctional.

The worktop is standard available in either AISI 304 stainless steel, HPL or Volkern. The stainless steel worktop is glued from underneath with high quality waterproof plywood. The tabletop is mounted on two height adjustable columns that operate on 220V-50Hz. Tables with 110V are available on request. As an option a stainless steel shelf can be mounted between the column legs for extra storage purposes. There are also other accessories available such as swivel castors, upright partitions with hooks or solid shelves, drawer blocks, basket racks etc. The Famos height adjustable packing tables can be completely manufactured upon client specific requirements.

PACKING

HEIGHT ADJUSTABLE PACKING TABLES

- Electrically height adjustable
- Various worktops available
- Robust aluminium columns and stainless steel feet

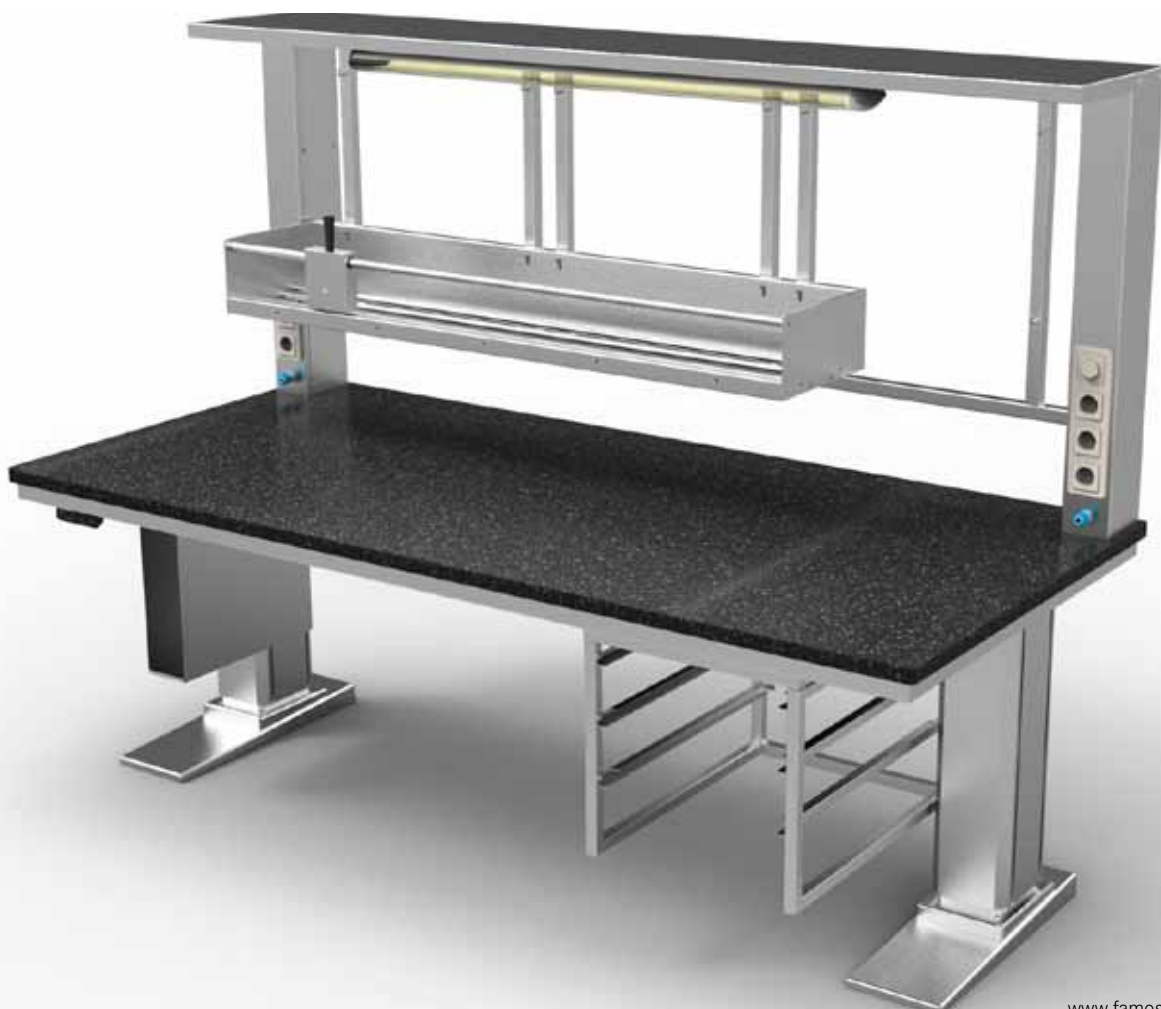


50.102.469



HEIGHT ADJUSTABLE PACKING TABLES

Art. No.	Product	Description	Packed
50.101.280	HL table HPL worktop	Height adjustable packing table with HPL worktop Dimensions: 1500 x 700 x 900 mm	1
50.101.283	HL table HPL worktop	Height adjustable packing table with HPL worktop Dimensions: 1800 x 700 x 900 mm	1
50.101.286	HL table HPL worktop	Height adjustable packing table with HPL worktop Dimensions: 2000 x 700 x 900 mm	1
50.101.289	HL table SS worktop	Height adjustable packing table with stainless steel worktop Dimensions: 1500 x 700 x 900 mm	1
50.102.469	HL table SS worktop	Height adjustable packing table with stainless steel worktop Dimensions: 1800 x 700 x 900 mm	1
50.101.295	HL table SS worktop	Height adjustable packing table with stainless steel worktop Dimensions: 2000 x 700 x 900 mm	1
50.101.298	HL table Volkern worktop	Height adjustable packing table with Volkern worktop Dimensions: 1500 x 700 x 900 mm	1
50.103.183	HL table Volkern worktop	Height adjustable packing table with Volkern worktop Dimensions: 1800 x 700 x 900 mm	1
50.101.304	HL table Volkern worktop	Height adjustable packing table with Volkern worktop Dimensions: 2000 x 700 x 900 mm	1



PACKING

FIXED HEIGHT PACKING TABLE

- Fixed height
- Various worktops available
- Made of AISI 304 stainless steel



Famos offers a large variety of fixed height worktables and packing tables. The worktop is standard available in either AISI 304 stainless steel, HPL or Volkern. The stainless steel worktop is glued from underneath with high quality waterproof plywood.

The fixed height tables are equipped with a stainless steel frame. The frame is made of stainless steel tube (35x35x1,5mm or 40x40x1,5mm depending upon the length of the table).

The tubes are completely welded on each corner.

The tables are standard equipped with four pieces of leveling feet.

Upon request the tables can be equipped with swivel castors instead.

As an option the packing tables can be equipped with a removable stainless steel shelf for storage purposes.

There are also other accessories available such as upright partitions with hooks or solid shelves, drawer blocks, basket racks etc.

FIXED HEIGHT PACKING TABLES

Art.-No.	Product	Description	Packed
50.101.307	Fixed height table HPL top	Fixed height packing table with HPL worktop Dimensions: 1500 x 700 x 900 mm	1
50.101.310	Fixed high table HPL top	Fixed height packing table with HPL worktop Dimensions: 1800 x 700 x 900 mm	1
50.101.313	Fixed height table HPL top	Fixed height packing table with HPL worktop Dimensions: 2000 x 700 x 900 mm	1
50.101.316	Fixed high table SS top	Fixed height packing table with stainless steel worktop Dimensions: 1500 x 700 x 900 mm	1
50.101.319	Fixed height table SS top	Fixed height packing table with stainless steel worktop Dimensions: 1800 x 700 x 900 mm	1
50.103.037	Fixed high table SS top	Fixed height packing table with stainless steel worktop Dimensions: 2000 x 700 x 900 mm	1
50.101.325	Fixed height table Volkern top	Fixed height packing table with Volkern worktop Dimensions: 1500 x 700 x 900 mm	1
50.101.328	Fixed high table Volkern top	Fixed height packing table with Volkern worktop Dimensions: 1800 x 700 x 900 mm	1
50.101.331	Fixed height table Volkern top	Fixed height packing table with Volkern worktop Dimensions: 2000 x 700 x 900 mm	1

Besides the tables that are mentioned above, Famos offers packing tables in many other dimensions as well.

The article numbers as mentioned above only refer to the tables and do not include any shelves underneath, upright partitions, drawer blocks, castors etc.

The Famos fixed height packing tables can be adapted to suit your requirements.



PACKING

WORKSTATION

- Manufactured upon customer requirements
- Various worktops available
- Made of AISI 304 stainless steel



Famos designs and manufactures complete stainless steel workstations upon client-specific requirements to improve the working environment and the ergonomics of the staff, who has to work with it. The worktop is standard available in either AISI 304 stainless steel, HPL or Volkern.

The stainless steel worktop is glued from underneath with high quality waterproof plywood.

The workstation can be equipped with single door cabinets or drawer blocks underneath. In case requested, an upright partition can be added to the workstation. This upright partition is made of stainless steel columns and can either be equipped with hooks or solid shelves. The upright partition can be equipped with a cover plate for a nice finish. This cover plate is standard available in either AISI 304 stainless steel or HPL. Underneath the cover plate fluorescent lighting can be mounted. RJ45 data sockets, power supply sockets and air supply connectors can be implemented in the stainless steel columns of the upright partition as well. Famos also has chairs and magnification lamps in its product range to complement its packing tables and work stations.



FAM 81 N



FAM 802 S/S



FAM 122T



FAM 319

CHAIRS

Art. no.	Product	Description	Packed
24.900.774	FAM 802 S/S	Chair with PUR/Pro seating / backrest and stainless steel frame, sitting height: 560-800mm with Ø 450mm height adj. footring	1
24.900.178	FAM 81N	Chair with PUR/Pro seating / backrest and alumin. chrome frame, sitting height: 520-710 mm with Ø 500mm height adj. footring	1

Other chairs are available on request

MAGNIFICATION LAMPS

Art. no.	Product	Description	Packed
24.900.145	FAM 122T	Magnification lamp with 4-diopter magnifier Ø 120 mm, 130°C / 140°C adjusting angle arms	1
24.900.194	FAM 319	Magnification lamp with 3-diopter magnifier 160x105mm, 140°C / 69°C adjusting angle arms	1

PAPER TROLLEY

- Material: AISI 304 stainless steel
- To store 4 different sizes of wrapping paper
- Equipped with 4 anti-static castors

Paper stands and trolleys are widely used for storage of sterilization wrapping papers. The Famos paper trolleys have been designed to store wrapping paper clearly and to have them within hand reach whenever they are required. The trolleys are made of AISI 304 stainless steel which ensures a life time use without any problems. The paper trolley 50.101.082 is a paper stand on four swivel castors made of stainless steel round tubes. It has four frames on which up to four different dimensions of material of paper can be hung. The paper trolley is equipped with four anti-static Ø 75 mm swivel castors of which two have a brake. Just above the swivel castors four wall protectors are mounted which prevent the trolley from colliding against the wall.

The paper trolley 50.101.082 will be supplied unassembled.

It can be completed with the following optional accessories:

- Solid bottom shelf
- Bottom grid
- Paper clamps to keep wrapping paper in place

Other paper trolleys are available upon request.



50.101.082



50.500.091

PAPER TROLLEY

Art. No.	Product	Description	Packed
50.101.082	Paper trolley	Paper trolley with 4 frames Stainless steel, dimensions: 1225 x 600 x 900 mm	1
50.200.241	Bottom shelf	Solid bottom shelf Stainless steel, dimensions: 1170 x 400 x 25 mm	1
50.101.343	Bottom grid	Bottom grid Stainless steel, dimensions: 1170 x 400 x 25 mm	1
50.500.091	Clamp	Paper clamp Stainless steel (4 pieces needed per trolley)	1

PACKING

INSTRUMENT TABLES

- Electrically height adjustable
- Various table supports and dimensions
- Made of AISI 304 stainless steel



50.104.100

In the operating theatre there is a continuous desire to optimize both working conditions and working environment. Various considerations play a role in achieving this, like perfect sterilization, an effective lighting system, but also instrument tables suitably geared towards the task on hand.

Famos supplies electrically adjustable instrument tables which are renowned for their quality, reliability and serviceability. The tables are operated by two buttons located beneath the rim of the table top. One button elevates the top while the other lowers it. When a sterile sheet is draped over the table top the button can still be used to alter the height of the table without having to change its position.

Almost entirely constructed from stainless steel the instrument tables by Famos are available in four different designs: one with a centrally positioned column, two versions with the column at a short side of the table and one with two columns. A low voltage motor and battery system which operates the motion mechanism is built into the column. Depending on the model they have either three or four sturdy swivel castors. The height adjustable instrument tables by Famos need almost no maintenance except for the batteries which need to be charged regularly.



50.100.668



50.100.662

HEIGHT ADJUSTABLE INSTRUMENT TABLES

DESCRIPTION / TECHNICAL DATA

Instrument table

- Lifting capacity: 50 kg on the centre.
- Stainless steel worktop with raised edges.
- Worktop is reinforced from underneath with plastic bounded wood.
- Column placed centrally.
- Four Ø 75 mm anti-static castors.
- Mains voltage charger: 100-240 VAC, 50/60 Hz

Art. No.	Dimensions worktop	Height adjustment
50.100.662	700 x 500 mm	800 - 1200 mm
50.100.663	950 x 550 mm	800 - 1200 mm
50.101.115	700 x 500 mm	900 - 1400 mm
50.101.116	950 x 550 mm	900 - 1400 mm

Assistance table

- Lifting capacity: 30 kg, except for the 50.100.670, which has a lifting capacity of 50 kg.
- Stainless steel worktop with raised edges.
- Worktop is reinforced from underneath with plastic bounded wood.
- Column placed at the short side.
- Three Ø 75 mm anti-static castors.
- Mains voltage charger: 100-240 VAC, 50/60 Hz.

Art. No.	Dimensions worktop	Height adjustment
50.100.668	500 x 400 mm	900 - 1400 mm
50.100.669	600 x 400 mm	900 - 1400 mm
50.100.670	700 x 500 mm	900 - 1400 mm
50.104.021	700 x 500 mm, swivel top	900 - 1400 mm

DESCRIPTION / TECHNICAL DATA

Instrument / assistance table

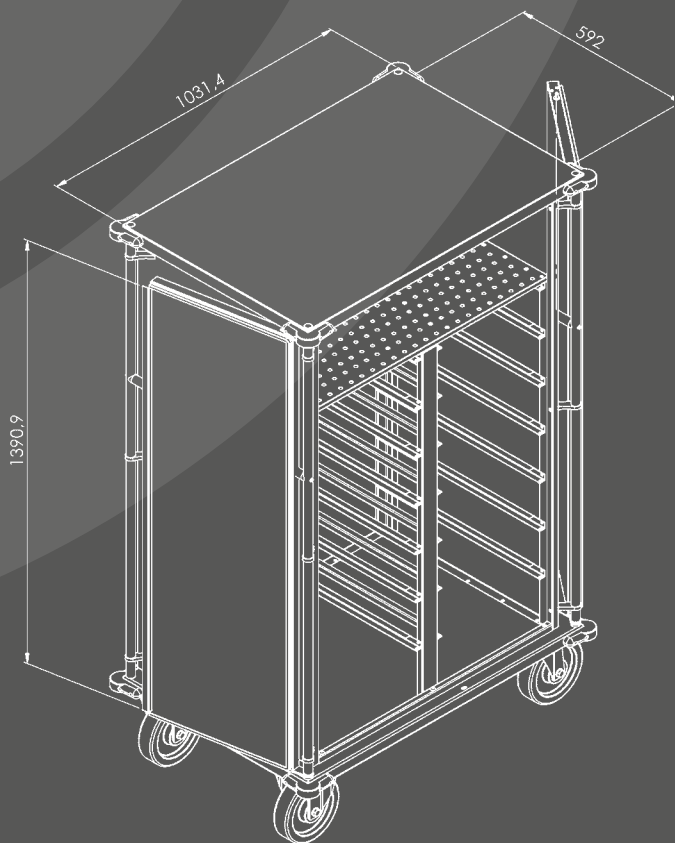
- Lifting capacity 30 kg.
- Stainless steel worktop with raised edges.
- Worktop is reinforced from underneath with plastic bounded wood.
- Column placed at the short side.
- Four Ø 75 mm anti-static castors.
- Mains voltage charger: 100-240 VAC, 50/60 Hz.

Art. No.	Dimensions worktop	Height adjustment
50.100.664	700 x 500 mm	800 - 1200 mm
50.100.665	950 x 550 mm	800 x 1200 mm
50.100.666	700 x 500 mm	900 x 1400 mm
50.100.667	950 x 550 mm	900 x 1400 mm

Instrument table

- Lifting capacity: 30 kg.
- Stainless steel worktop with raised edges.
- Worktop is reinforced from underneath with plastic bounded wood.
- Equipped with two columns.
- Mains voltage charger: 100-240 VAC, 50/60 Hz
- A low shelf is available as an option.

Art. No.	Dimensions worktop	Height adjustment
50.104.100	1070 x 570 mm	800 - 1200 mm
50.104.101	1070 x 570 mm	900 - 1400 mm



TRANSPORT



TRANSPORT

CAR-IN-CAR SYSTEM

- Closed outer transport trolley
- Inner trolley with profiles for sterilization baskets
- Transport trolley for inner trolley



Car-in-car system made of AISI 304 stainless steel which consists of the following trolleys:

Closed outer trolley, inner trolley and transport trolley for the inner trolley.

The trolleys are made of AISI 304 stainless steel.

The complete combination of trolleys has been designed for the transportation of dirty instruments from the operation theatre to the CSSD or vice versa without the risk of causing contamination.

The transport trolley has been designed to slide the inner trolley out of the outer trolley without lifting which prevents serious injuries from happening to the staff.

The inner trolley can be equipped with u-profiles to store baskets with flanged top wires that can be sterilized within the same rack without having to take the goods out again.

The closed outer trolley can be equipped with two doors which are located on the longer side of the trolley. Upon request the trolley can be equipped with an additional door on one of the shorter sides as well. When only side loading is required, the trolley can be equipped with a single door on one of the shorter sides only.

The doors of the outer trolley are lockable to prevent unauthorized people from opening the trolley and causing any cross-contamination within the institute. On the outer trolley two pushing bars are placed in a vertical position on both shorter sides, which makes it possible to open the doors over 270°. By placing the pushing bars like this, everybody can use the trolley, no matter how tall or short they are.

The doors are equipped with a long lasting seal that makes the trolley near to air tight.

In order to facilitate transport, the outer trolley is equipped with two Ø 200mm swivel castors which are equipped with a brake and two Ø 200mm rigid castors. In the bottom corners bumpers have been placed to protect not only the trolley but the walls as well.

In case requested, the trolleys of the car-in-car system can be equipped with special castors to make them suitable to be entered into a trolley washer / disinfecter.

The car-in-car systems are completely being manufactured upon client-specific requirements.



TRANSPORT

CLOSED TRANSPORT TROLLEY

- AISI 304 stainless steel
- Can be completely customized upon client specific requirements
- With solid shelves or stainless steel profiles for baskets



Closed CSSD trolleys which has been designed for transportation of goods between the operation theatre and CSSD.

The trolleys are completely made of stainless steel 304 instead of aluminum.

The trolleys consist of one compartment. They are equipped with solid shelves which are standard adjustable in height. The trolleys are equipped with 2 or 3 shelves.

Furthermore, it is also possible to store items on the bottom of the trolleys.

Upon request the trolleys can be equipped with slides with stainless steel profiles to accommodate sterilization baskets.

The trolleys can be equipped with one or two doors.

Two pushing bars are placed in a vertical position on both shorter sides of the trolleys, which makes it possible to open the doors over 270°. By placing the pushing bars like this, everybody can use the trolleys, no matter how tall or short they are.

The doors are lockable to prevent unauthorized people from opening the trolleys. All doors are equipped with long lasting rubber sealings.

The transport trolleys are equipped with two Ø 200mm swivel castors with brakes and two Ø 200mm rigid castors for easy transport.

In the bottom corners bumpers have been placed to protect not only the trolley but the walls as well.

In case requested, the closed transport trolley can be equipped with special castors to make them suitable to be entered into a trolley washer / disinfectant.

There are various accessories available for the Famos closed transport trolleys such as A4 document holder, door fixations to hold the doors open, a coupling system with pulling rod to connect multiple trolleys with one another.

The closed transport trolleys can be completely adapted to client-specific requirements.



CLOSED TRANSPORT TROLLEYS

Art. No.	Product	Description	Packed
50.105.496	Closed single door trolley 3 shelves	Closed transport trolley with single door and 3 shelves, Dimensions: 758x767x1249 mm LxWxH	1
50.105.446	Closed double door trolley 2 shelves	Closed transport trolley with double doors and 2 shelves, Dimensions: 1210x725x1365 mm LxWxH	1
50.105.447	Closed double door trolley 3 shelves	Closed transport trolley with double doors and 3 shelves, Dimensions: 1210x725x1715 mm LxWxH	1

TRANSPORT

OPEN TRANSPORT TROLLEY WITH SLIDES

- AISI 304 stainless steel
- With stainless steel profiles to accommodate sterilization baskets
- Completely manufactured according to client specific requirements



Famos has designed Z-trolleys which is the ideal solution when space are very limited. They are completely made of AISI 304 stainless steel and are equipped with slides to store sterilization baskets.

The special feature of these trolleys is that they can be nestled inside one another when empty to take up as little space as possible. The quantity and dimensions of baskets that fit into the trolley are being adapted to customer specific requirements.

For the internal transportation of baskets at the CSSD department, Famos has also designed other open transport trolleys with slides. The trolleys are completely made of AISI 304.

The slides are made of s/s u-profiles or L-profiles. U-profiles are suitable to store baskets with flanged top wires. The u-profiles have a high side in order to prevent baskets from falling during transport. L-profiles are suitable to transport containers or baskets without flanged top wires.

The quantity and dimensions of the baskets that can be placed in the trolley depends on the requirements of the customer.

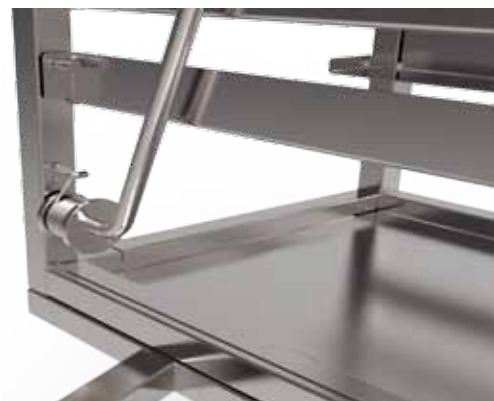
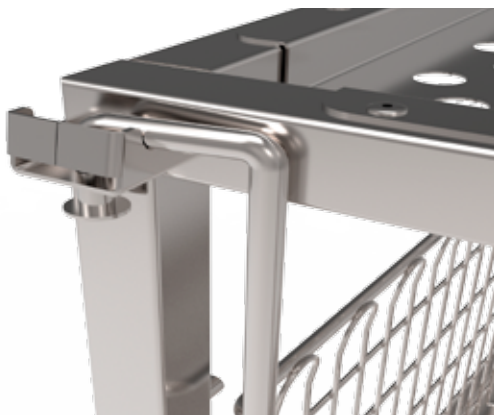
The trolleys are standard equipped with four Ø 100 mm swivel castors of which two are equipped with a brake. Above the castors bumpers have been placed to protect not only the trolley but the walls as well.

Furthermore, the trolley can be equipped with push handles on one side or both sides.

As an option, the trolley can be equipped with a fixed closed bottom plate or/and a fixed stainless steel top cover, which prevents dust from getting into the baskets.

In addition the open trolleys can be equipped with a coupling hook to combine two trolleys with one another to create one big trolley.

The open transport trolleys are being manufactured upon client specific requirements.



TRANSPORT

OPEN TRANSPORT TROLLEY WITH SHELVES

- AISI 304 stainless steel
- With stainless steel shelves
- Completely manufactured according to client specific requirements



Open transport trolleys which are used for the internal transportation or temporary storage of baskets and trays within the CSSD.

The open CSSD trolleys are completely made of AISI 304 stainless steel.

The open trolleys are standard equipped with 2, 3 or 4 solid shelves which are mounted on a fixed height.

The surface of the shelves is completely flat.

The frame of the trolleys are made of 25x25mm stainless steel square tubing.

The trolleys are equipped with four Ø 100 mm swivel castors of which two are equipped with a brake. Above the castors bumpers have been placed to protect not only the trolley but the walls as well.

Upon request the trolley can be equipped with push handles.

The open transport trolleys can be adapted to client specific requirements.

OPEN TRANSPORT TROLLEYS WITH SHELVES

Art. No.	Product	Description	Packed
50.103.572	Open transport trolley 2 shelves	Open transport trolley with 2 shelves Dimensions: 1000x700x900 mm LxWxH	1
50.103.573	Open transport trolley 3 shelves	Open transport trolley with 3 shelves Dimensions: 1000x700x960 mm LxWxH	1
50.103.574	Open transport trolley 4 shelves	Open transport trolley with 4 shelves Dimensions: 1000x700x1295 mm LxWxH	1

PERACETIC ACID TRANSPORT TROLLEY

For transport of peracetic acid Famos has designed a special transport trolley.

The trolley is made of AISI 304 stainless steel.

It can store and transport up to 6 plastic cans of peracetic acid with a volume of 5 liters per can.

The dimensions of the trolley casing are circa 665x423x400mm LxWxH.

The trolley is equipped with a partition in order to make sure that each can is being fixated inside the trolley. This partition is removable.

The upper side is equipped with a lid which consists of two parts, which can be opened 270°C.

The trolley is equipped with rubber strips at the upper side to minimize possible smells of the peracetic acid. In closed position the lid is equipped with an upstanding rim.

The trolley is equipped with Ø 125 mm swivel castors of which two are equipped with a brake.

The Famos peracetic acid trolley is equipped with a push handle for easy maneuvering.

The lid can be supplied with a lock or without.



50.104.667

PERACETIC ACID TRANSPORT TROLLEY

Art. No.	Product	Description	Packed
50.104.667	Peracetic acid trolley with lockable lid	Peracetic acid trolley with lockable lid Dimensions: 855x453x1080 mm LxWxH	1
50.105.446	Peracetic acid trolley with non-lockable lid	Peracetic trolley with non-lockable lid Dimensions: 855x453x1080 mm LxWxH	1

TRANSPORT

ELECTRICAL HEIGHT ADJUSTABLE TRANSPORT TROLLEYS

- AISI 304 stainless steel
- Completely adapted to sterilizer
- Loading trolley available on request



The Famos height adjustable transport trolleys have been designed for the loading and unloading of loading trolleys which have to or have been sterilized in a steam sterilizer.

The trolleys are made of AISI 304 stainless steel.

The height of the trolleys can be electrically adjusted to every sterilizer with the result that heavy human lifting is history.

The trolley is constructed of a high quality stainless steel frame that ensures a lifetime workability without having any worries.

TRANSPORT

The height adjustment can be done by two push buttons which are connected through a flexible curled wire. The rechargeable battery has to be charged once or twice a week in case of intensive use and is easily done by the supplied adapter. When the battery is charged frequently and the users prevent that it is getting completely empty, the lifetime of the battery will be around 7-10 years.

The trolleys are equipped with Ø 125 mm swivel castors for easy transport.

Two of the castors have a brake to prevent the trolley from gliding away.

The Famos height adjustable transport trolleys are equipped with a push handle for easy maneuvering.

The Famos height adjustable transport trolleys are completely being manufactured upon client-specific requirements in order to adapt the trolley to any brand of sterilizer.

Apart from height adjustable trolleys Famos can also manufacture fixed height transport trolleys in case required.

Loading trolleys are also available upon request.



TRANSPORT

PASS-THROUGH CABINET

- AISI 304 stainless steel
- With stainless steel profiles or solid shelves
- Can be completely modified to customer wishes



50.105.190

Pass-through cabinets which have been designed to be placed between the CSSD's clean zone and sterile zone. The pass-through cabinets allow the transportation of baskets or other items from one area to another without open door transportation. They are made of AISI 304 stainless steel. The pass-through cabinets can be equipped with solid shelves or with slides made of stainless steel u-profiles onto which baskets with flanged upper wires can be hung.

The pass-through cabinets with slides can standard accommodate ISO baskets of 600x400mm with a maximum height of 190mm. They have a capacity for either 1x7 baskets or 2x7 baskets.



They are equipped with two doors. A stainless steel one on the loading side and one with an aluminum frame with safety glass on the unloading site. This makes it easy for staff on the exit side to see the movement of goods which are ready to be processed.

Both of the doors are equipped with a long lasting rubber sealing which makes the cabinets near to airtight. The doors can never be opened at the same time which will prevent airflow between the clean area and the sterile area. The doors are being opened by a ridged push button which will release the magnet locking system within the cabinets.

The pass-through cabinets can be completely adapted to customer specific requirements.

PASS-THROUGH CABINETS

Art . No.	Product	Description	Packed
50.103.405	Single pass-through cabinet with slides	Pass-through cabinet with slides for 1x7 ISO baskets of 190mm high Dimensions: 825x500x1586 mm WxDxH	1
50.103.583	Double pass-through cabinet with slides	Pass-through cabinet with slides for 2x7 ISO baskets of 190mm high Dimensions: 1650x500x1586 mm WxDxH	1
50.105.190	Single pass-through cabinet with shelves	Pass-through cabinet with 7 height adjustable solid shelves Dimensions: 825x500x1590 mm WxDxH	1

STORAGE



ENDOSCOPE BASKETS

Art . no.	Product	Description	Packed
50.101.276	Endoscope basket	Endoscope basket with lockable lid and silicon fixation, Dimensions: 465 x 80 x 52 mm, mesh wire: 10 x 10 mm	1
50.101.814	Endoscope basket	Endoscope basket with lockable lid and silicon fixation, Dimensions: 290 x 80 x 52 mm, mesh wire: 10 x 10 mm	1

More baskets available on request

BASKETS FOR STORAGE AND STERILIZATION

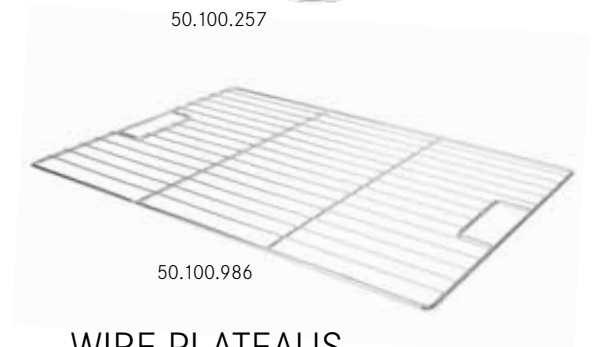
- Material: AISI 304 stainless steel
- Stackable and nestable*
- With single or double upper rim for extra stability
- 50.100.406 and 50.100.407 are with endless wires
- Electrolytically polished



50.100.257



50.100.406



50.100.986



50.100.885

WIRE PLATEAUS

- Material: AISI 304 stainless steel
- Integrated grips
- Wire thickness Ø 2,5 / 6 mm
- Electrolytically polished

STERILIZATION BASKETS / WIRE PLATEAUS

Art . No.	Product	Description	Packed
50.100.986	ISO wire plateau	Wire plateau 600 x 400 mm	1
50.100.808	ISO basket	Sterilization basket with double upper rim Dimensions: 600 x 400 x 200 mm LxWxH	1
50.100.807	ISO basket	Sterilization basket with double upper rim Dimensions: 600 x 400 x 150 mm LxWxH	1
50.100.885	ISO basket	Sterilization basket with double upper rim Dimensions: 600 x 400 x 130 mm LxWxH	1
50.100.806	ISO basket	Sterilization basket with double upper rim Dimensions: 600 x 400 x 100 mm LxWxH	1
50.100.257	DIN basket	Sterilization basket with double upper rim and stacking indication Dimensions: 600 x 300 x 135 mm LxWxH	1
50.100.406	Basket	Sterilization basket with single upper wire and endless wires Not nestable. Dimensions: 575 x 280 x 260 mm LxWxH	1
50.100.407	Basket	Sterilization basket with single upper wire and endless wires Not nestable. Dimensions: 575 x 280 x 130 mm LxWxH	1
50.100.778	Basket	Sterilization basket with single upper rim Dimensions: 600x400x130mm LxWxH	1

*The 50.100.406 and 50.100.407 are not nestable

STORAGE

INSTRUMENT TRAYS

- Material: AISI 304 stainless steel
- With wire sides or perforated sides
- Stacking rim possible
- Collapsible grips possible
- Electrolytically polished



50.100.062 / 50.100.063



50.101.185 / 50.100.685 / 50.100.684



50.102.470



- Fine mesh instrument trays are available
- Special models such as round trays can be manufactured
- All models can be completely customized

DEEP DRAWN INSTRUMENT TRAYS WITH WIRE SIDES

Art. no.	Product	Description	Packed
50.100.062	1/1 DIN tray	Instrument tray, deep drawn, with collapsible grips and stacking rim Dimensions: 480 x 250 x 60 mm LxWxH, mesh wire: 3 x 3 mm	1
50.100.063	1/2 Din tray	Instrument tray, deep drawn, with collapsible grips and stacking rim Dimensions: 240 x 250 x 60 mm LxWxH, mesh wire: 3 x 3 mm	1
50.100.064	1/4 DIN tray	Instrument tray, deep drawn, with stacking rim. Excl. grips. Dimensions: 120 x 250 x 60 mm LxWxH, mesh wire: 3 x 3 mm	1

INSTRUMENT TRAYS WITH PERFORATED SIDES

Art. no.	Product	Description	Packed
50.101.656	1/1 DIN tray	Instrument tray with perforated sides, collapsible grips and flat bottom. Dimensions: 480 x 250 x 100 mm LxWxH, mesh wire: 6 x 6 mm	1
50.102.755	1/2 DIN tray	Instrument tray with perforated sides, collapsible grips and flat bottom. Dimensions: 240 x 250 x 100 mm LxWxH, mesh wire: 6 x 6 mm	1
50.100.684	1/1 DIN tray	Instrument tray with perforated sides, collapsible grips and flat bottom Dimensions: 480 x 250 x 60 mm LxWxH, mesh wire: 6 x 6 mm	1
50.100.685	1/2 DIN tray	Instrument tray with perforated sides, collapsible grips and flat bottom. Dimensions: 240 x 250 x 60 mm LxWxH, mesh wire: 6 x 6 mm	1
50.101.185	1/4 DIN tray	Instrument tray with perforated sides and flat bottom. Excl. grips. Dimensions: 120 x 250 x 60 mm LxWxH, mesh wire: 6 x 6 mm	1
50.101.499	1/1 ISO tray	Instrument tray with perforated sides, collapsible grips and flat bottom. Dimensions: 460 x 320 x 60 mm LxWxH, mesh wire: 6 x 6 mm	1
50.101.388	1/2 ISO tray	Instrument tray with perforated sides, collapsible grips and flat bottom. Dimensions: 230 x 320 x 60 mm LxWxH, mesh wire: 6 x 6 mm	1
50.101.573	1/4 ISO tray	Instrument tray with perforated sides and flat bottom. Excl. grips. Dimensions: 115 x 320 x 60 mm LxWxH, mesh wire: 6 x 6 mm	1

LID FOR INSTRUMENT TRAYS WITH PERFORATED SIDES

Art. no.	Product	Description	Packed
50.101.402	Lid 1/1 DIN	Lid for art. no.: 50.101.656 + 50.100.684, incl. lock Dimensions: 480 x 250 mm LxW, mesh wire 6 x 6 mm	1
50.101.460	Lid 1/2 DIN	Lid for art. no.: 50.102.755 + 50.100.685, incl. lock Dimensions: 240 x 250 mm LxW, mesh wire 6 x 6 mm	1

INSTRUMENT TRAYS WITH CLICK LID

Art. no.	Product	Description	Packed
50.102.323	Instrument tray with click lid	Instrument tray with click lid, wire thickness: 0,45 mm, Dimensions: 80 x 80 x 40 mm LxWxH, mesh wire: 1,12 x 1,12 mm	1
50.102.470	Instrument tray with click lid	Instrument tray with click lid, wire thickness: 0,45 mm, Dimensions: 80 x 80 x 30 mm LxWxH, mesh wire: 1,12 x 1,12 mm	1

The above mentioned instrument trays are just a small selection of our product range.

Our range of baskets and trays currently consists of over 550 models. We can also adapt existing baskets and trays to suit your requirements.

STORAGE

STORAGE SYSTEM

- AISI 304 stainless steel
- With stainless steel profiles or solid shelves
- Completely manufactured upon client requirements



Storage racks made of AISI 304 stainless steel.

They can be supplied with shelves or slides to accommodate sterilization baskets.

The pillars are made of square stainless steel tubing and are equipped with four pieces of leveling feet. The storage racks can be completely welded or can be supplied as modular systems.

The modular storage racks can be supplied unassembled which gives the user a larger flexibility to determine and assemble the configuration of the storage rack.

The modular storage rack can be mounted together very easily.

The storage racks can be completely manufactured upon client specific requirements.

STORAGE CABINETS

Storage cabinets which are made of AISI 304 stainless steel and which are easy to clean. The storage cabinets have two stainless steel doors which can be opened at 225° and which are lockable. The cabinets can be equipped with solid shelves which can be mounted on a fixed height or they can be height adjustable. Alternatively, the cabinets can be equipped with stainless steel slides to accommodate sterilization baskets. The slides can be made of u-profiles on which baskets with flanged top wires can be placed. The advantage of these u-profiles is that baskets can be drawn out partly without falling out. This is easy if goods only have to be taken out or placed into the basket without taking the complete basket out of the cabinet. Instead of u-profiles it is also possible to equip the slides with L-profiles to accommodate baskets without flanged top wires or containers. The cabinet is placed on a 100mm high plinth.



PASS-THROUGH HATCHES

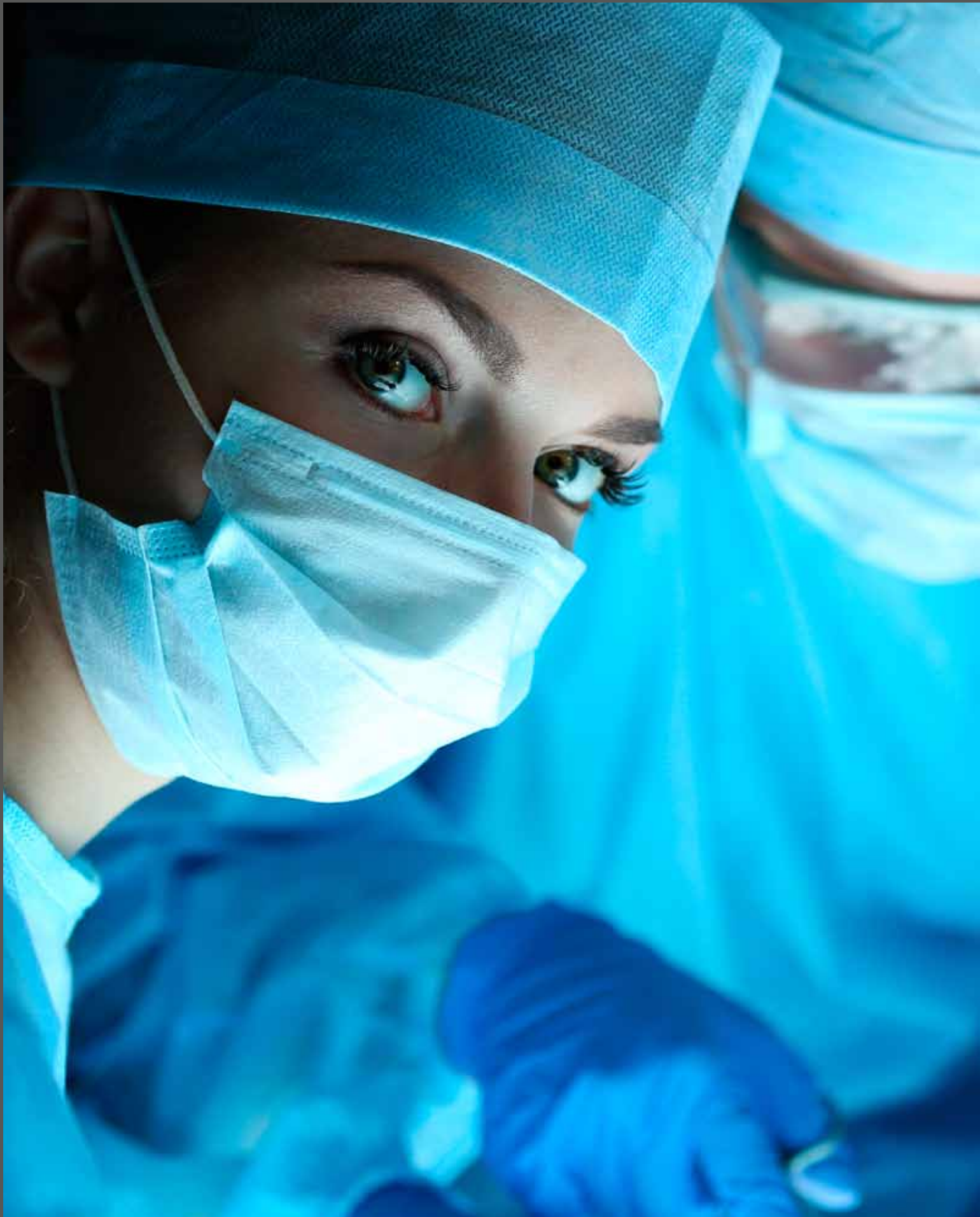
Pass-through hatches which have been designed for placement between the packing area and sterile area at the CSSD. The hatches are mounted between two walls. The transfer hatches are completely made of AISI 304 stainless steel with exception of the windows which are made of Lexan glass. The units can exist of one window or two windows. In case of two windows, they are interlocked in such a way that only one window can be opened at one time.

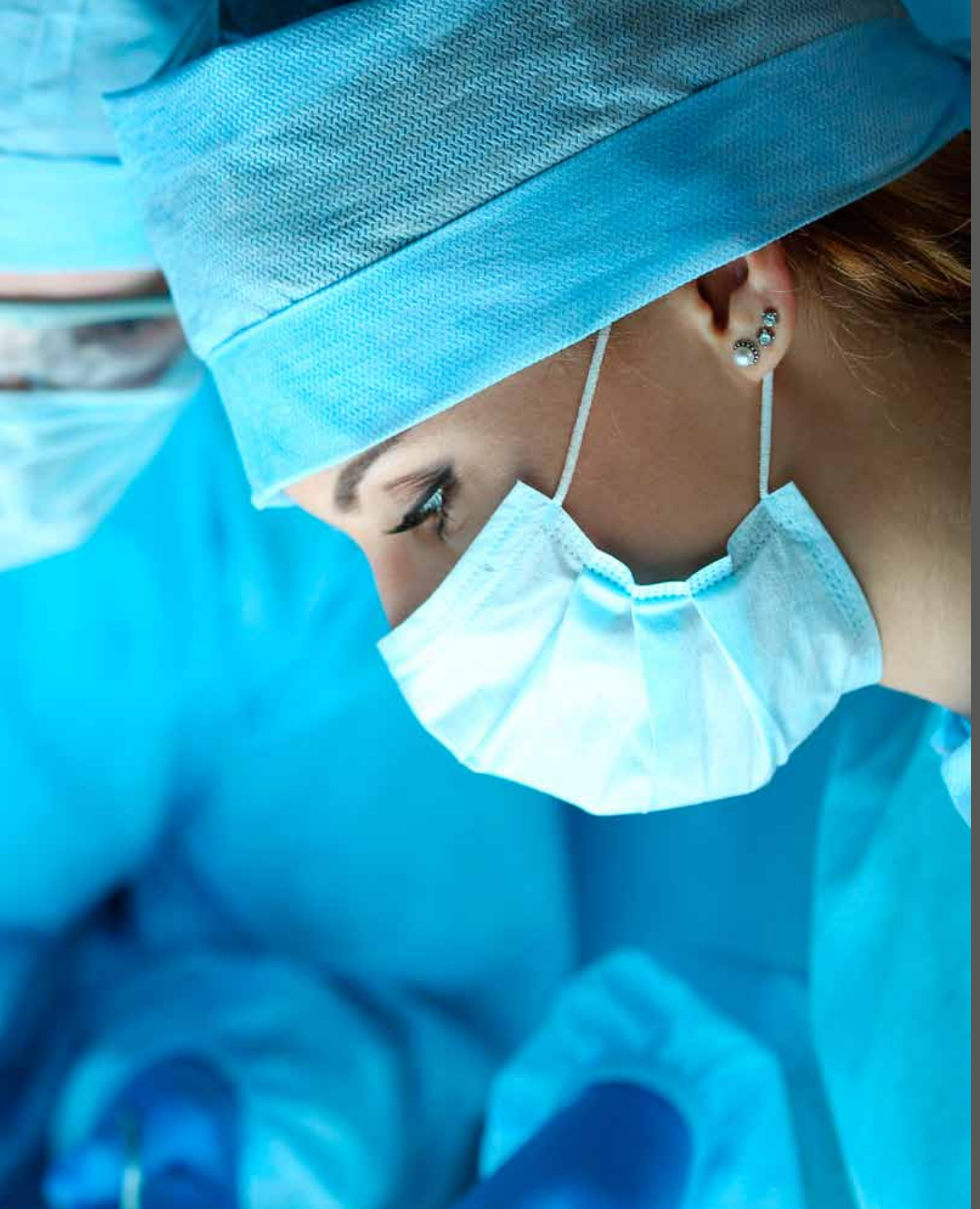
The units can be operated either manually or electrically by means of a push button on both sides of the unit. The complete hatches will be supplied with stainless steel covers and are equipped with a force protection in order to prevent dangerous situations from happening when closing the windows while materials have been placed underneath.

Instead of closed panels the understructure of the hatches can also consist of a closed cabinet.

The pass-through hatches are completely manufactured upon client specific requirements.

FAMOS – COMPETENCE IN CSSD







Contact



Famos bv

Noorderpoort 20
5916 PJ Venlo
The Netherlands
Telefon +31 (0) 77 - 3548800
Telefax +31 (0) 77 - 3520432

www.famos-medical.com
famos@famos.nl



Famos Medizintechnik-Vertriebs GmbH

Robert-Bosch-Straße 3
47638 Straelen
Germany
Telefon +49 (0) 2834 - 6704
Telefax +49 (0) 2834 - 8571

www.famos-med.de
sales@famos-med.de